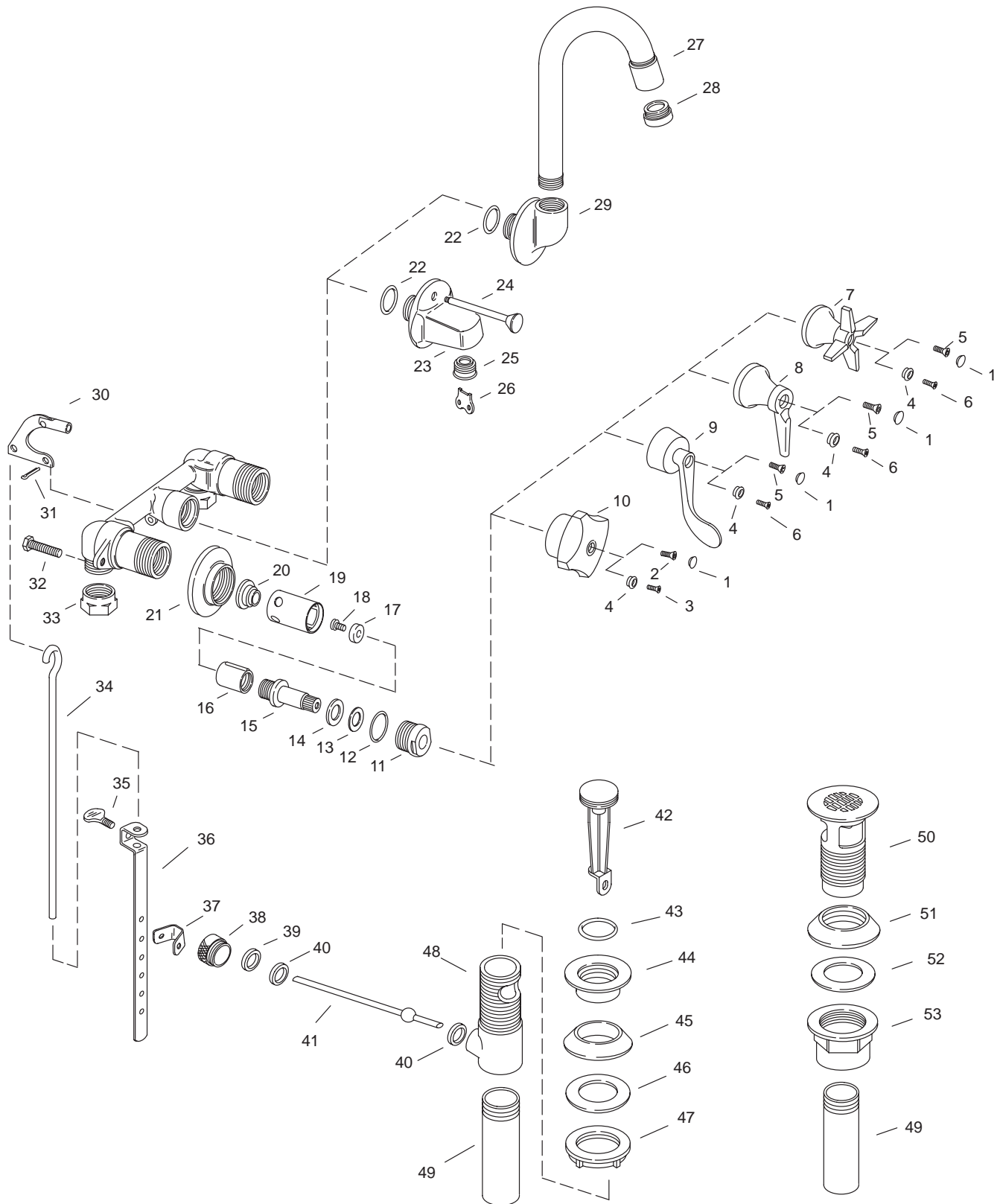


KOHLER® SERVICE PARTS

TRITON™ LAVATORY FAUCETS
 K-8040-**-**-BA K-8046-**-**-AA
 K-8044-**-**-AA K-8046-**-**-BB
 K-8044-**-**-BB



Variation and/or finish/color code may be required when ordering.

KOHLER® SERVICE PARTS

TRITON™ LAVATORY FAUCETS
 K-8040-**-**-BA K-8046-**-**-AA
 K-8044-**-**-AA K-8046-**-**-BB
 K-8044-**-**-BB

SERVICE PARTS

ITEM NO.	PART NO.	DESCRIPTION
1	52622	Button Cap
2	56074	Screw, .164-32 UNC x .31
3	58891-S	Screw, 8-32 x .51
4	52623-C	Button Cap, Blue
	52623-H	Button Cap, Red
	52623-A	Button Cap, Black
5	31490	Screw, .164-32 UNC-2A x .50
6	58892-S	Screw, 8-32 x .67
7	52639	4-Prong Handle & Bonnet Assembly
8	52636	Lever Handle, Small Bonnet Assembly
9	53187	Centerset Handle Assembly, Wristblade
10	52642	Centerset Handle & Bonnet Assembly, Standard
11	20475	Bonnet
12	34300	O-Ring 018
13	34263	O-Ring 111
14	34265	Washer, .482 x .815
15	34320	Valve Stem, LH (Clockwise Close)
	34319	Valve Stem, RH (Counterclockwise Close)
16	20314	Plunger, LH (K-8040 only)
	20313	Plunger, RH (K-8040 only)
	34862	Plunger, LH
	34844	Plunger, RH
17	20961	Washer, .185 x .505
18	34848	Screw, .164-32 UNC-2A x .281
19	34842	Sleeve
20	35119	Sleeve, Valve Seat
21	34301	Flange
22	40933	O-Ring
23	34916	Spout for Shelf-Back Lav (w/Lift Rod Hole)
	34433	Spout for Shelf-Back Lav (w/o Lift Rod Hole)
24	34349	Push Rod Assembly
25	59621	Aerator, 2.0, 15/16 Male
	59875	Aerator, Streambreaker, 15/16 Male
	41782	Aerator, 1.5 GPM
	59874	V.R. Aerator, 2.0, 15/16 Male
	55008	V.R. Aerator, 1.5 GPM
	20343	V.R. Aerator, 0.5 GPM
26	21999	Wrench, VP
27	33392	Gooseneck Spout
28	59620	Aerator, 2.0, 13/16 Male
	59721	Aerator, Streambreaker, 13/16 Male
	41781	Aerator, 1.5 GPM
	59722	V.R. Aerator, 2.0, 13/16 Male
	55403	V.R. Aerator, 1.5 GPM
	20344	V.R. Aerator, 13/16 Male, 0.5 GPM
29	33391	Ell, Supply
30	34898	Trip Lever & Link Assembly
31	33799	Pin, Cotter 1/8 x 3/4
32	35227	Screw, .250-20 UNC-2A x 1.00
33	32751	Nut, .5-14 NPSM
34	51198	Connecting Rod
35	57422	Thumb Screw
36	73382	Link
37	40228	Spring Clip
38	57403	Retainer Nut
39	38745	Washer, .531 ID x .734 OD
40	38744	Washer, .484 ID x .748 OD
41	41312	Lever Assembly
42		Available in Service Kit Only
43	38676	O-Ring, 024 x 1.114
44	57408	Flange
45	57966	Gasket
46	40238	Washer
47	40076	Locknut
48	57405	Drain Body
49	41640	Tailpiece, 4 1/4 Long
50	57248	Strainer Assembly
51	33507	Drain Gasket
52	34043	Washer, 1-17/32 x 2-1/8
53	20831	Nut, 1-1/2-16 UNS

SERVICE KITS

PART NO.	ITEM NO.	QTY.	DESCRIPTION
22949			Stem & Plunger Subassembly RH (K-8040 only)
	13	1 ea.	O-Ring 111
	14	1 ea.	Washer, .482 x .815
	15	1 ea.	Valve Stem, RH (Counterclockwise Close)
	16	1 ea.	Plunger, RH
	17	1 ea.	Washer, .185 x .505
	18	1 ea.	Screw, .164-32 UNC-2A x .281
42301			Stem & Plunger Subassembly RH
	13	1 ea.	O-Ring 111
	14	1 ea.	Washer, .482 x .815
	15	1 ea.	Valve Stem, RH (Counterclockwise Close)
	16	1 ea.	Plunger, RH
	17	1 ea.	Washer, .185 x .505
	18	1 ea.	Screw, .164-32 UNC-2A x .281
22950			Stem & Plunger Subassembly LH (K-8040 only)
	13	1 ea.	O-Ring 111
	14	1 ea.	Washer, .482 x .815
	15	1 ea.	Valve Stem, LH (Clockwise Close)
	16	1 ea.	Plunger, LH
	17	1 ea.	Washer, .185 x .505
	18	1 ea.	Screw, .164-32 UNC-2A x .281
42302			Stem & Plunger Subassembly LH
	13	1 ea.	O-Ring 111
	14	1 ea.	Washer, .482 x .815
	15	1 ea.	Valve Stem, LH (Clockwise Close)
	16	1 ea.	Plunger, LH
	17	1 ea.	Washer, .185 x .505
	18	1 ea.	Screw, .164-32 UNC-2A x .281
24822			Seat & Sleeve Assembly
	19	1 ea.	Sleeve
	20	1 ea.	Sleeve, Valve Seat
58156			Drain Hardware Assembly
	35	1 ea.	Thumb Screw
	36	1 ea.	Link
	37	1 ea.	Spring Clip
	38	1 ea.	Retainer Nut
	39	1 ea.	Washer, .531 ID x .734 OD
	40	2 ea.	Washer, .484 ID x .748 OD
	41	1 ea.	Lever Assembly
58154			Stopper Kit, Plastic
	42	1 ea.	VR Stopper Assembly, Plastic
	43	1 ea.	O-Ring, 024 x 1.114
58152			Drain Assembly, Plastic
	42	1 ea.	VR Stopper Assembly, Plastic
	43	1 ea.	O-Ring, 024 x 1.114
	44	1 ea.	Flange
	45	1 ea.	Gasket
	46	1 ea.	Washer
	47	1 ea.	Locknut
	48	1 ea.	Drain Body
57427			Lav Drain Assembly
	50	1 ea.	Strainer Assembly
	51	1 ea.	Drain Gasket
	52	1 ea.	Washer, 1-17/32 x 2-1/8
	53	1 ea.	Nut, 1-1/2-16 UNS
56520			Gasket Kit
	51	1 ea.	Drain Gasket
	52	1 ea.	Washer, 1-17/32 x 2-1/8
	53	1 ea.	Nut, 1-1/2-16 UNS

Variation and/or finish/color code may be required when ordering.