

Ordering Information

Applicable product:		
Three-hole sink	K-5856-3	shown
Single-hole sink	K-5856-1	not shown

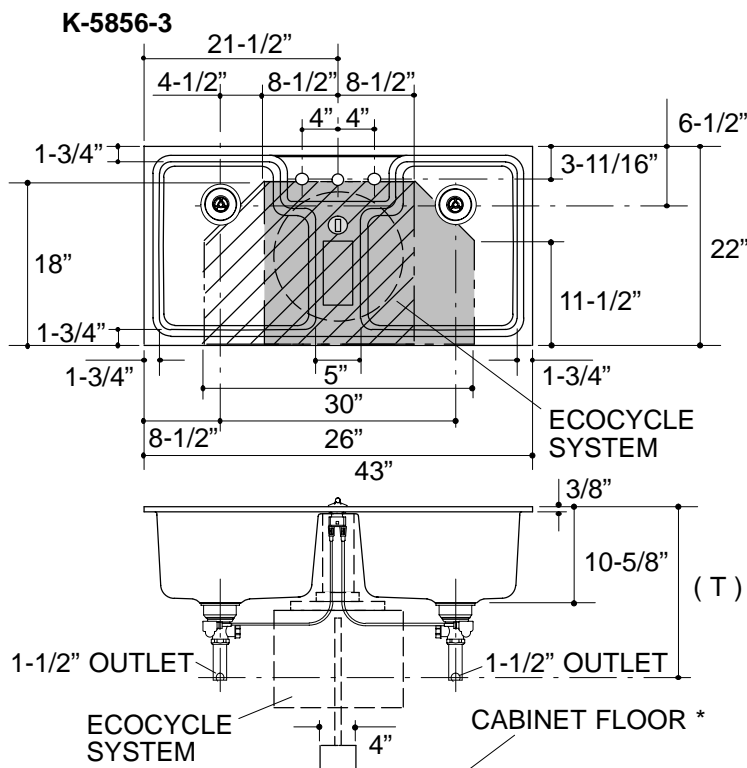
Product Information

Fixture*:		basin area	water depth
Sink		17" x 19"	9"
Outlet	3-5/8" D.		
Faucet holes	1-3/8" D.		

* Approximate measurements for comparison only.

Installation Notes

Refer to installation instructions included with fixture before beginning installation.



Roughing-In Notes	
Fixture dimensions are nominal and conform to tolerances in ASME/ANSI Standard A112.19.1M.	
* Dimensions are to cabinet floor (not finished floor).	
(T) Drain typically 19".	
Cutout	41-3/4" x 20-3/4" with 2-1/4" radius corners.
	No drain piping to extend into this area for right-hand delivery.
	No drain piping to extend into this area for left-hand delivery.
To rough-in one center drain outlet rather than the two shown, route piping around the gray or crosshatched area.	

