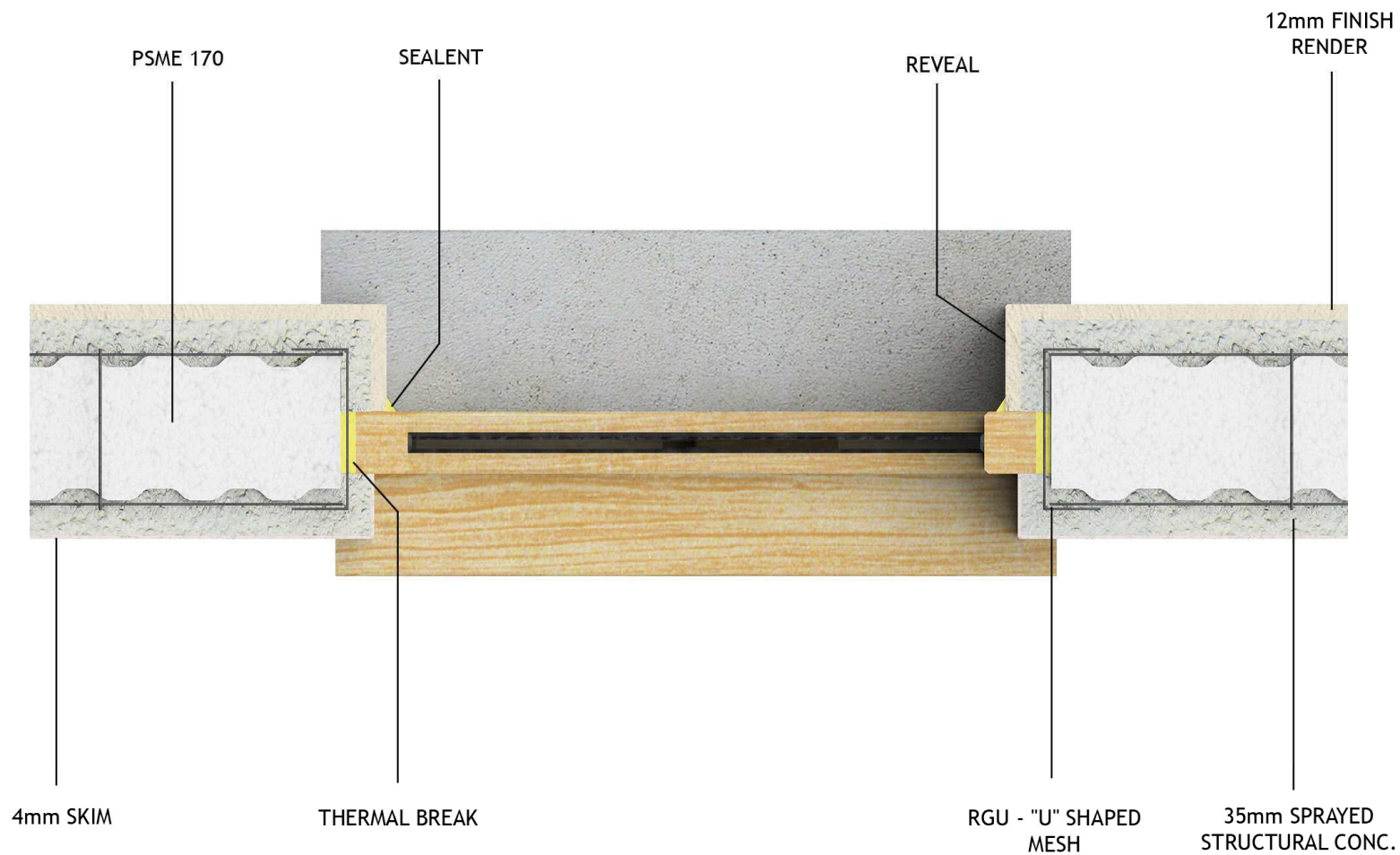




**3-DIMENSIONAL
STANDARD
CONSTRUCTION
DETAILS**

**REV. A
15-02-2006**





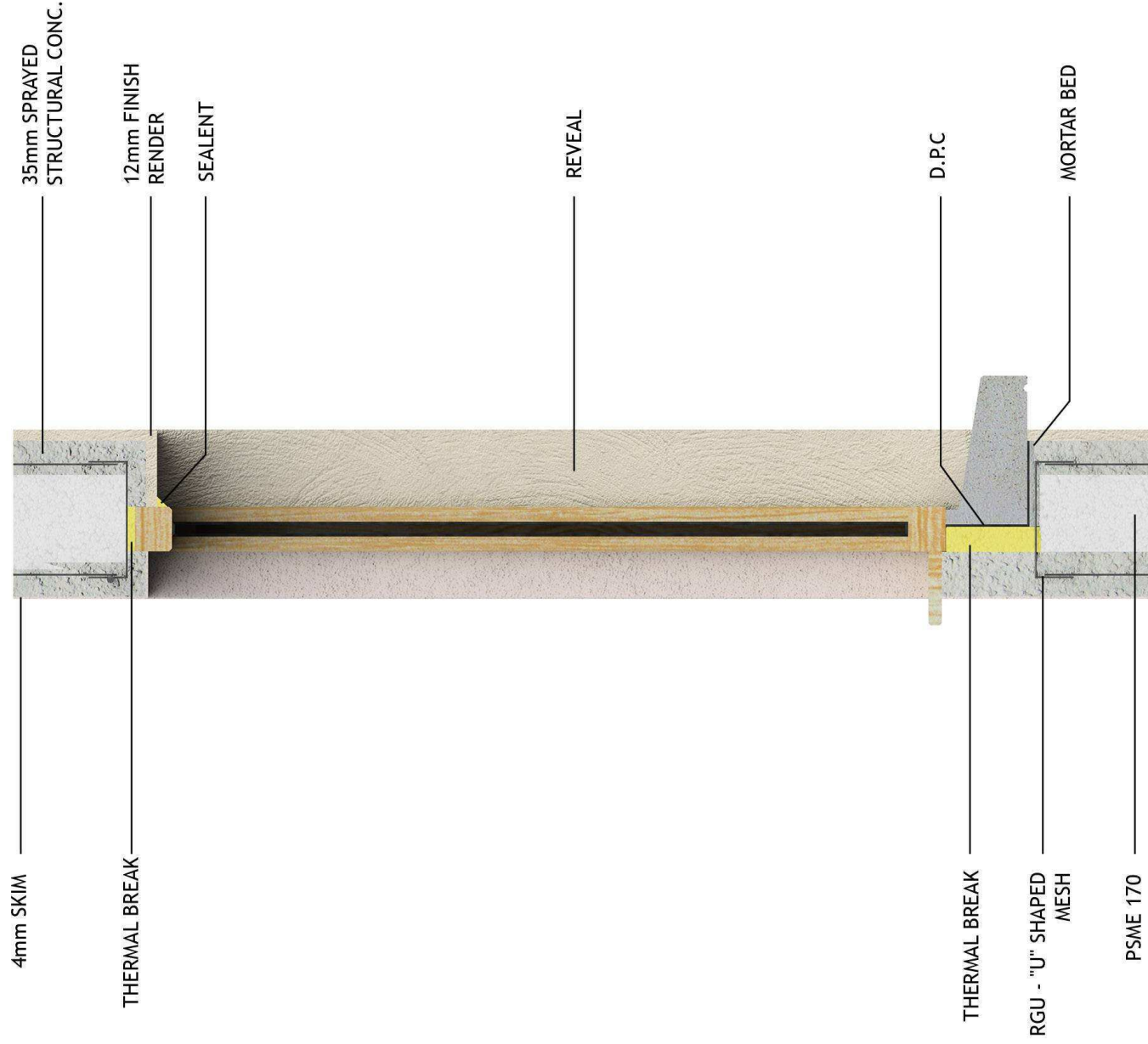
PSME - WINDOW SECTIONAL DETAILS

BOTLEY LANE, PORTARLINGTON, CO. OFFALY, REPUBLIC OF IRELAND

Tel: +353/0502-45000 Fax: +353/0502-45054

www.m2ireland.com info@m2ireland.com

Advanced Building System



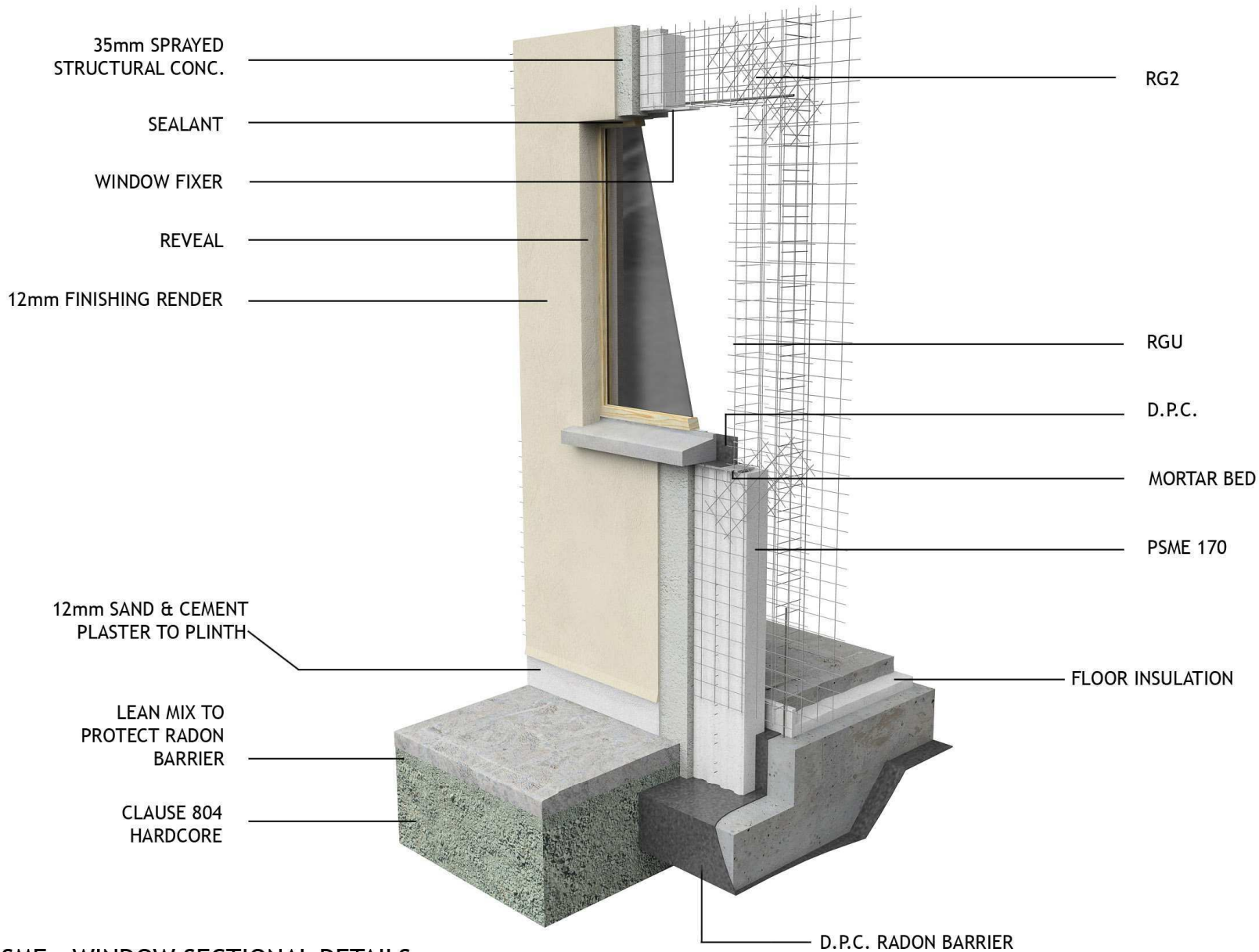
PSME - WINDOW SECTIONAL DETAILS



BOTLEY LANE, PORTARLINGTON, CO. OFFALY, REPUBLIC OF IRELAND

Tel: +353/0502-45000 Fax: +353/0502-45054

www.m2ireland.com info@m2ireland.com

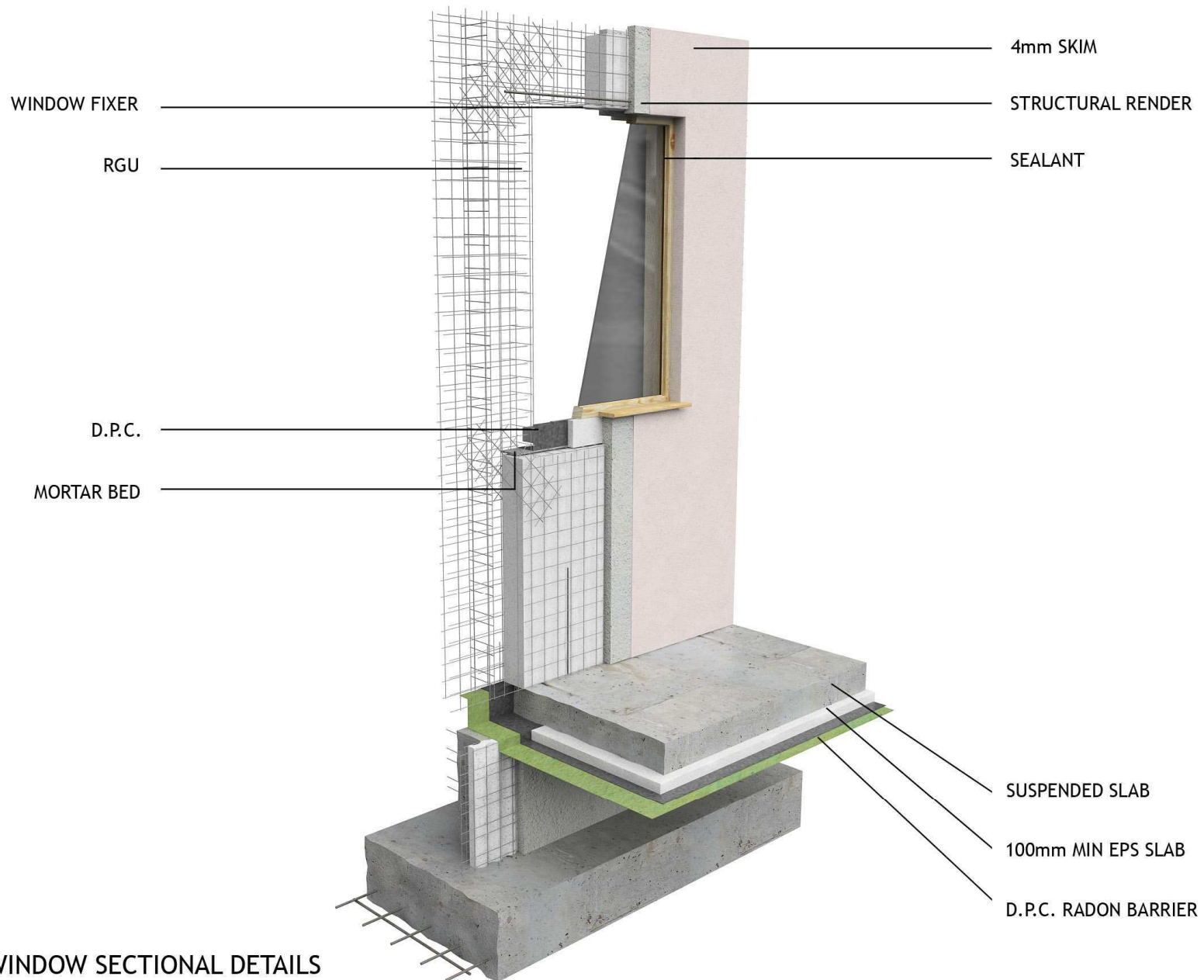


PSME - WINDOW SECTIONAL DETAILS

BOTLEY LANE, PORTARLINGTON, CO. OFFALY, REPUBLIC OF IRELAND

Tel: +353/0502-45000 Fax: +353/0502-45054

www.m2ireland.com info@m2ireland.com

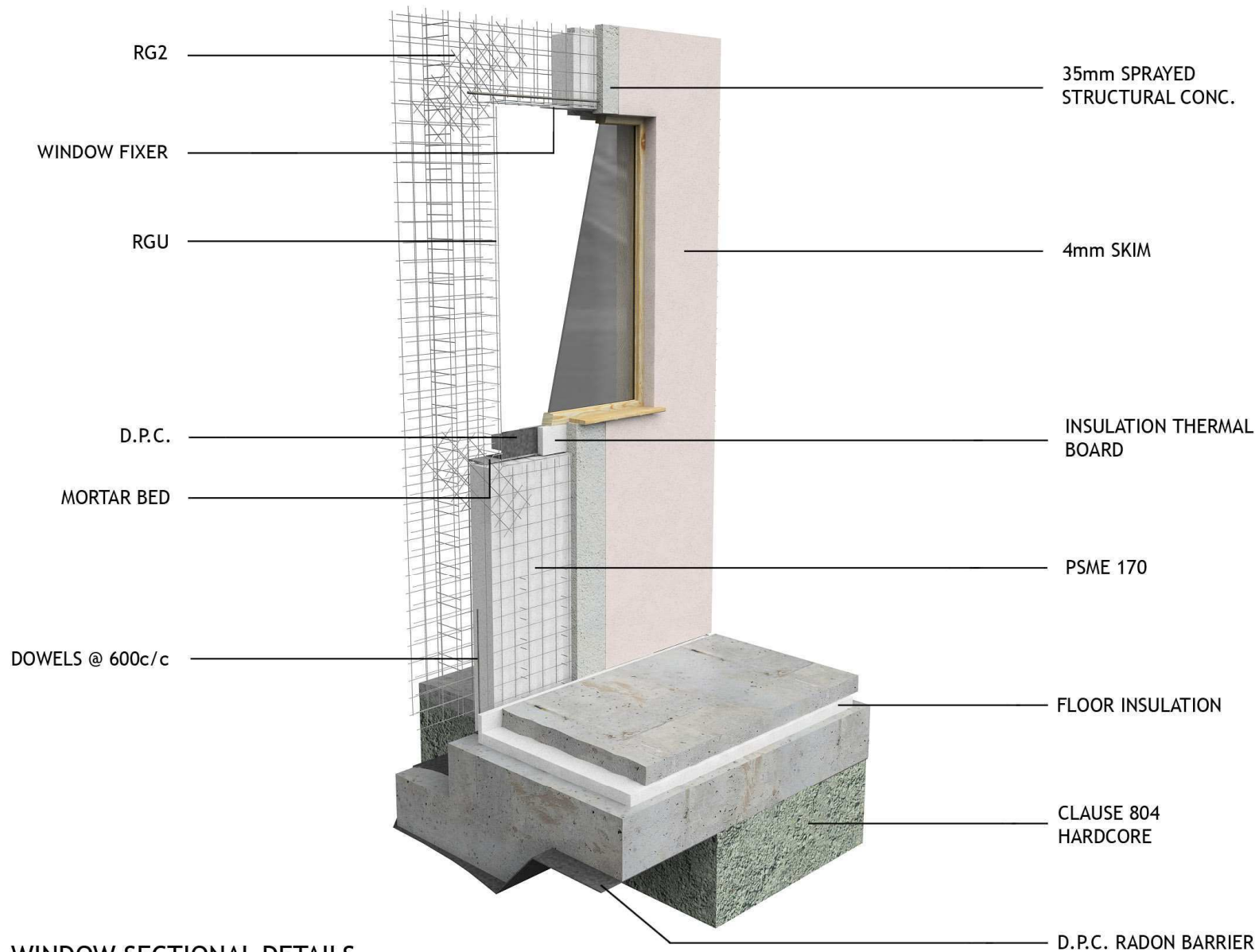


PSME - WINDOW SECTIONAL DETAILS

BOTLEY LANE, PORTARLINGTON, CO. OFFALY, REPUBLIC OF IRELAND

Tel: +353/0502-45000 Fax: +353/0502-45054

www.m2ireland.com info@m2ireland.com

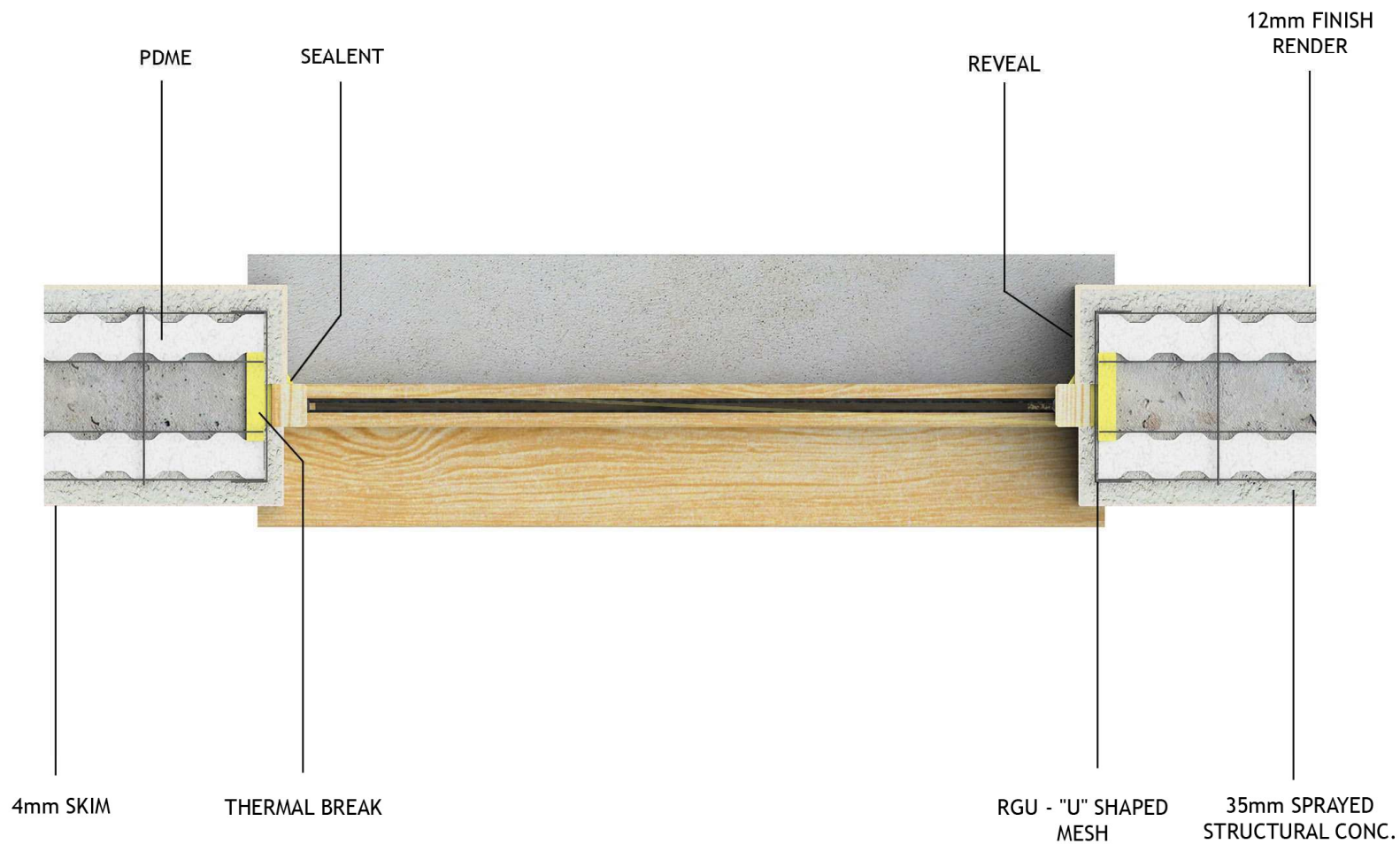


PSME - WINDOW SECTIONAL DETAILS

BOTLEY LANE, PORTARLINGTON, CO. OFFALY, REPUBLIC OF IRELAND

Tel: +353/0502-45000 Fax: +353/0502-45054

www.m2ireland.com info@m2ireland.com

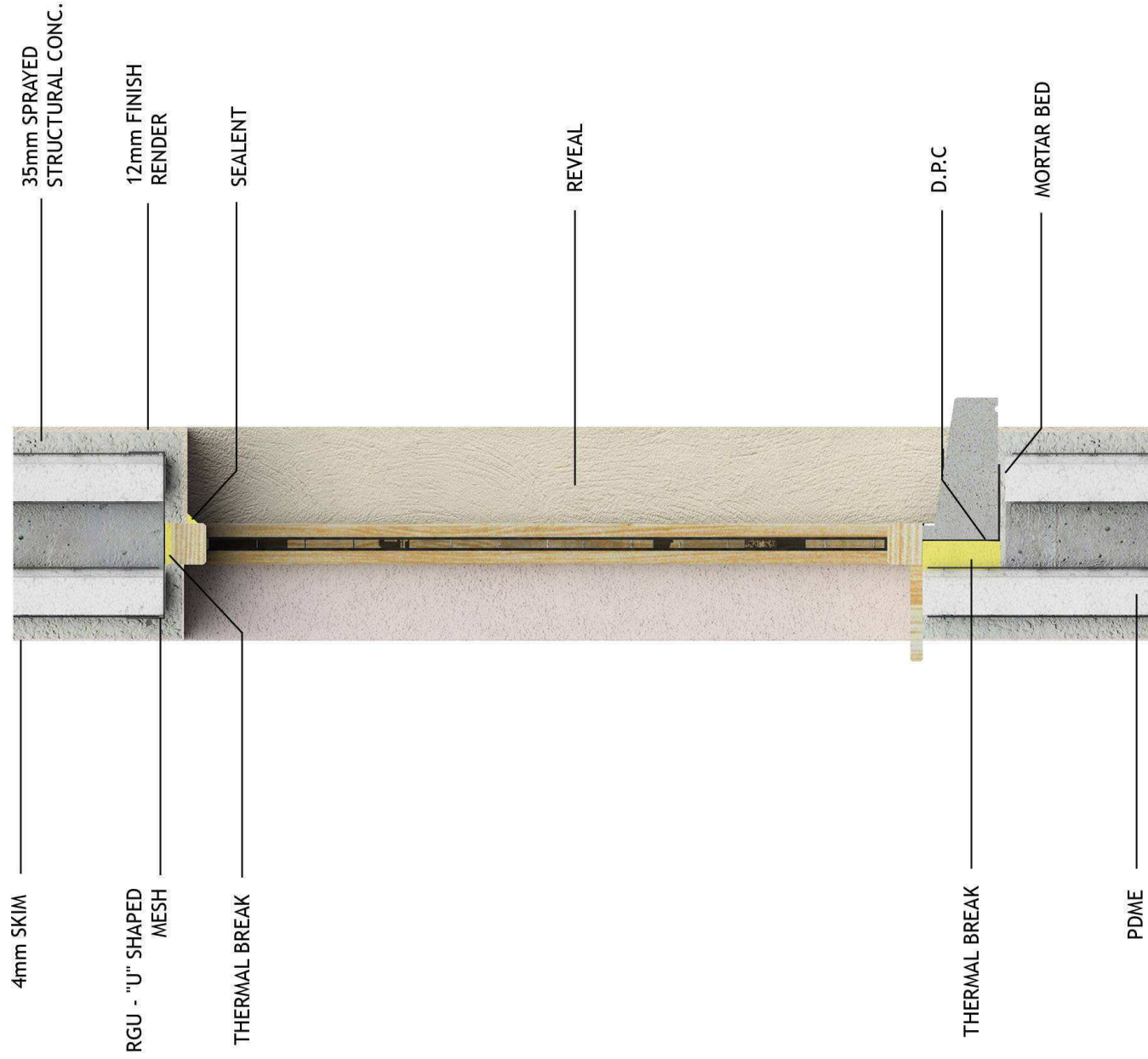


PDME - WINDOW SECTIONAL DETAILS

BOTLEY LANE, PORTARLINGTON, CO. OFFALY, REPUBLIC OF IRELAND

Tel: +353/0502-45000 Fax: +353/0502-45054

www.m2ireland.com info@m2ireland.com



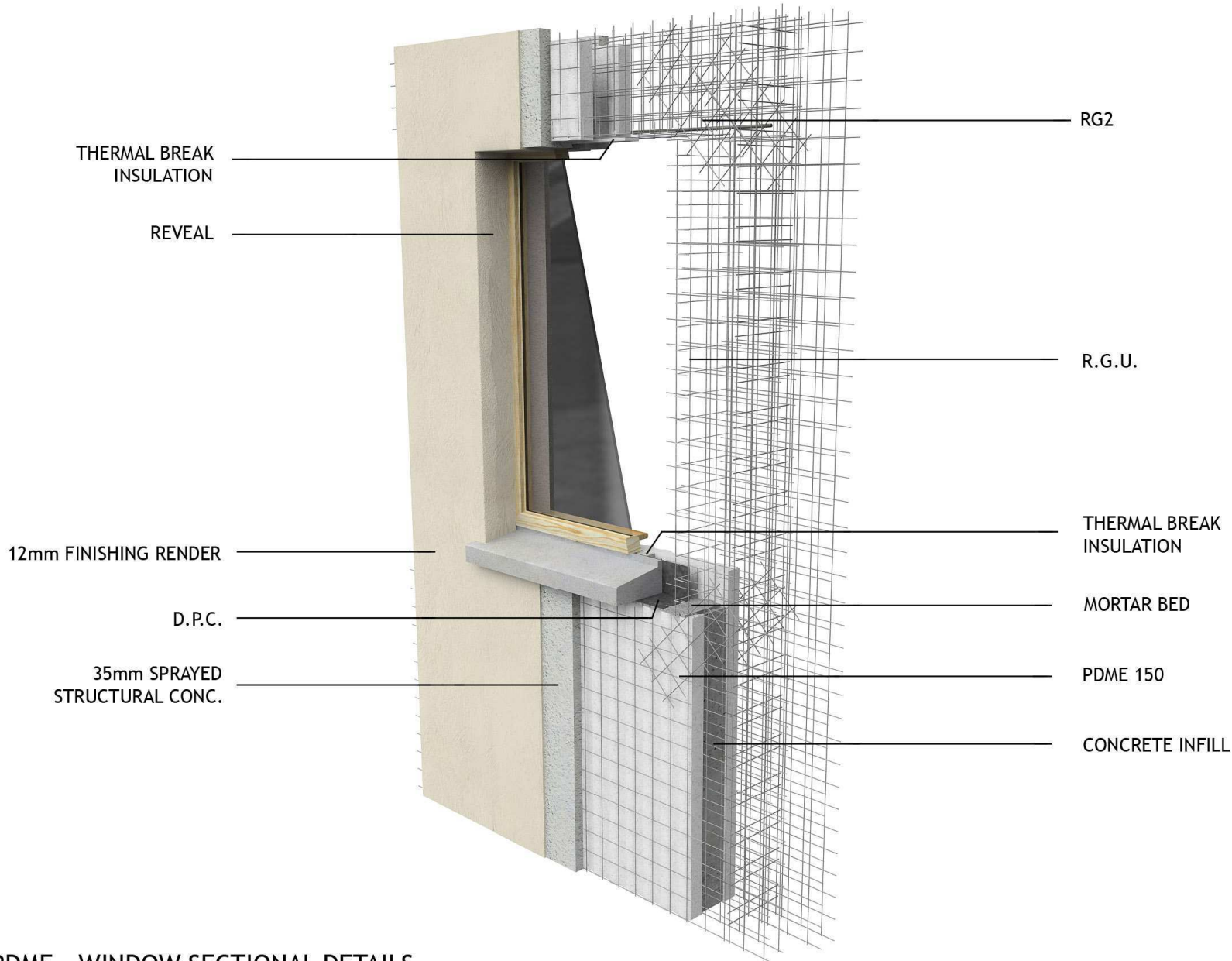
PDME - WINDOW SECTIONAL DETAILS



BOTLEY LANE, PORTARLINGTON, CO. OFFALY, REPUBLIC OF IRELAND

Tel: +353/0502-45000 Fax: +353/0502-45054

www.m2ireland.com info@m2ireland.com

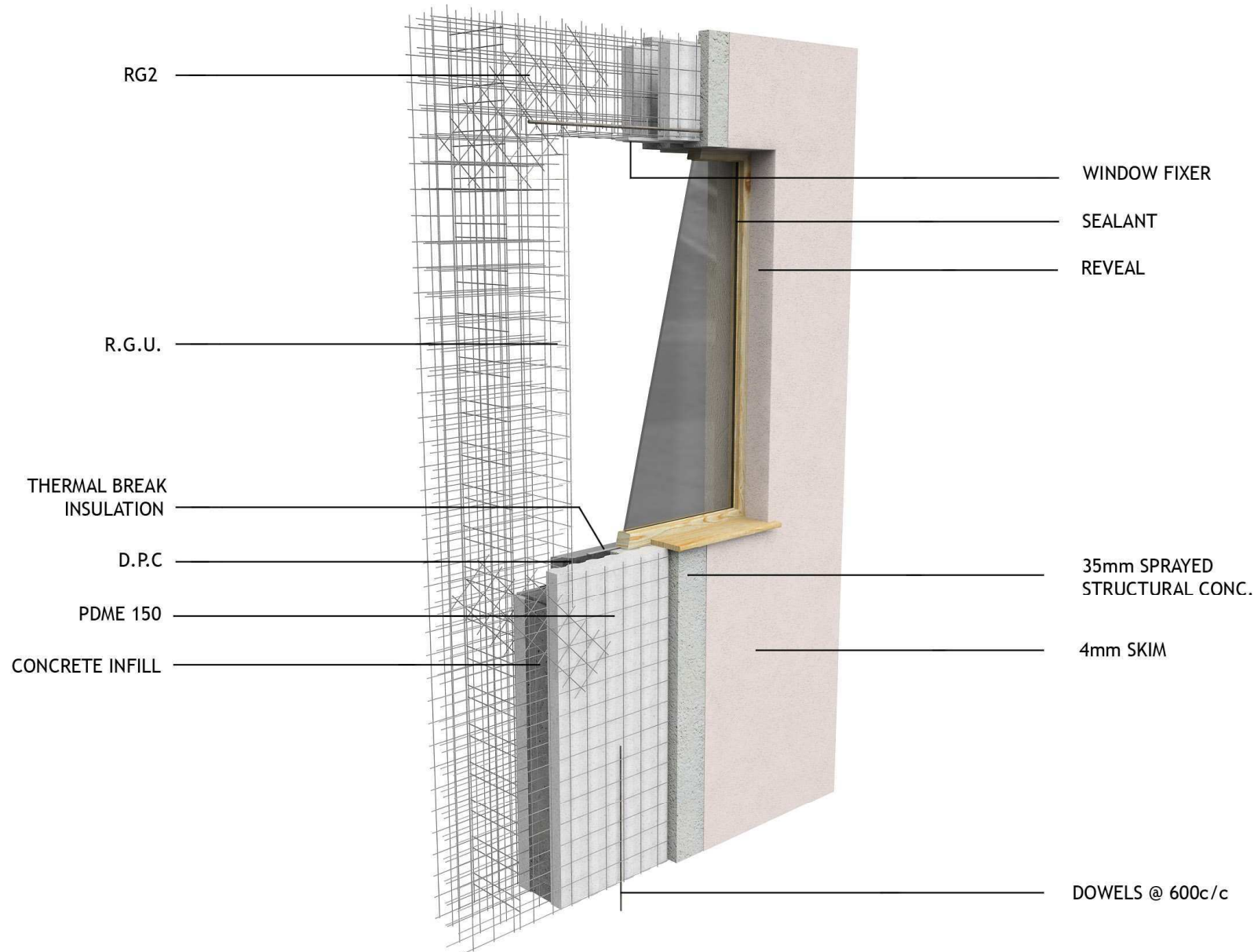


PDME - WINDOW SECTIONAL DETAILS

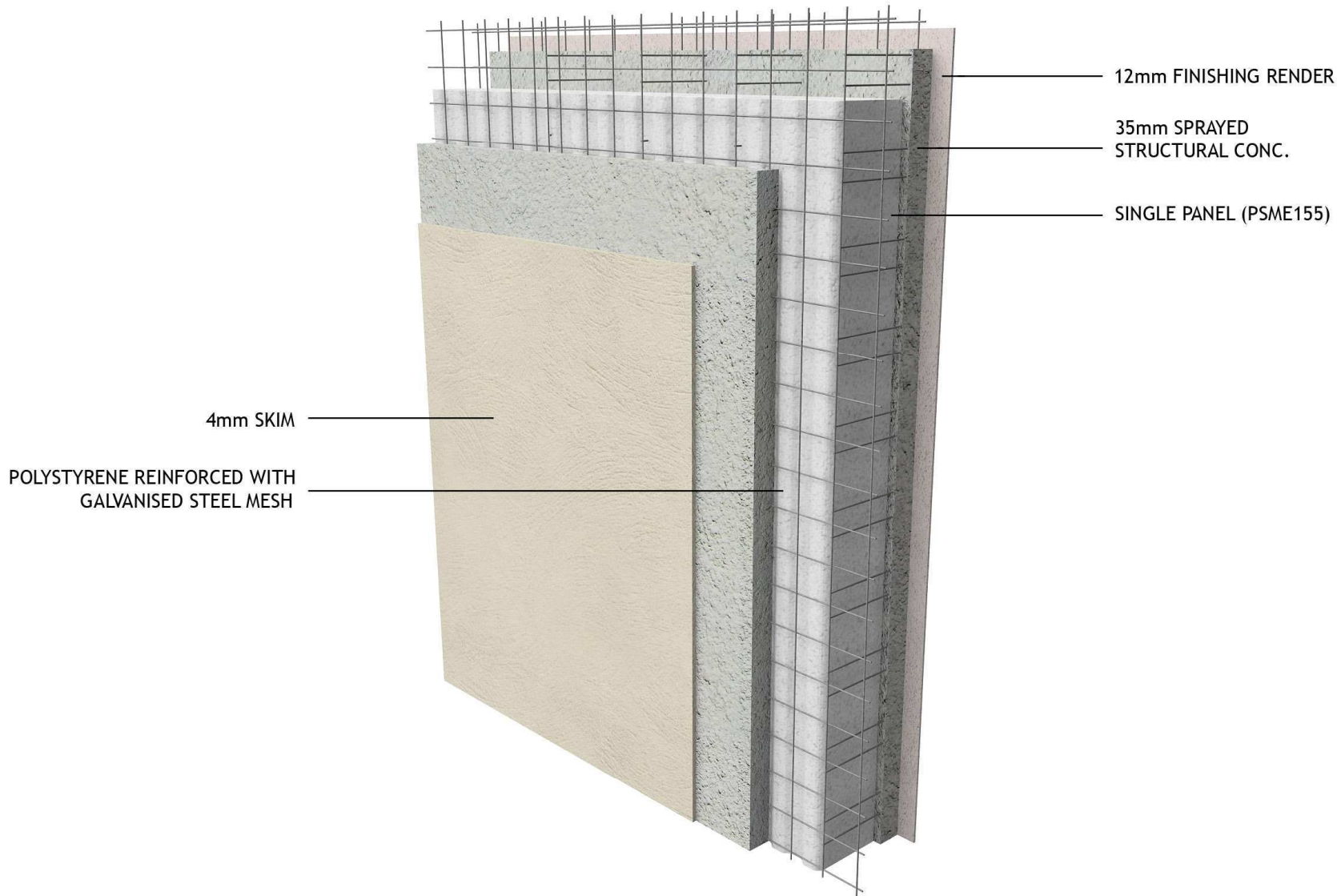
BOTLEY LANE, PORTARLINGTON, CO. OFFALY, REPUBLIC OF IRELAND

Tel: +353/0502-45000 Fax: +353/0502-45054

www.m2ireland.com info@m2ireland.com



PDME - WINDOW SECTIONAL DETAILS

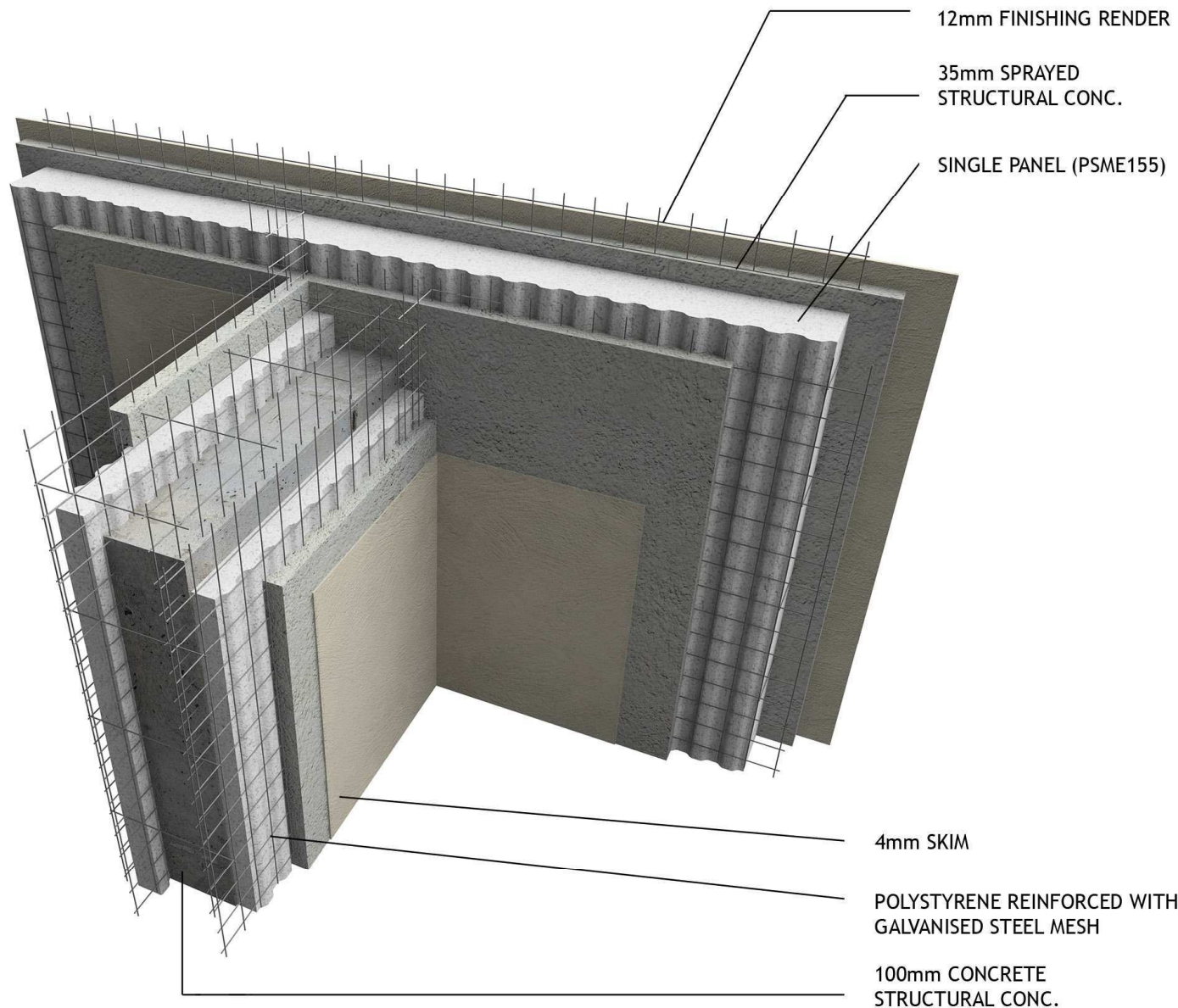


PARTY WALL CONSTRUCTION

BOTLEY LANE, PORTARLINGTON, CO. OFFALY, REPUBLIC OF IRELAND

Tel: +353/0502-45000 Fax: +353/0502-45054

www.m2ireland.com info@m2ireland.com

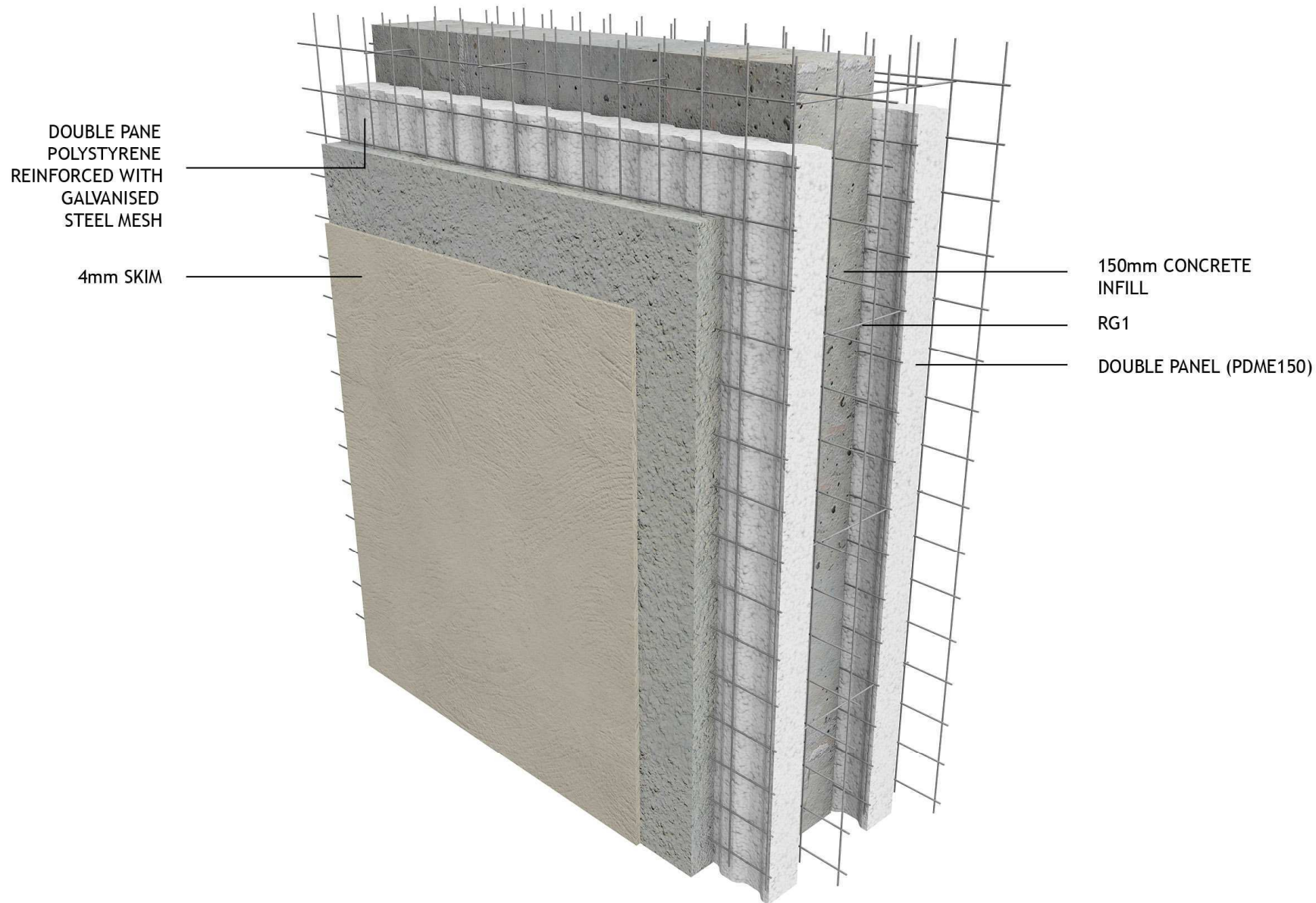


PARTY WALL CONSTRUCTION

BOTLEY LANE, PORTARLINGTON, CO. OFFALY, REPUBLIC OF IRELAND

Tel: +353/0502-45000 Fax: +353/0502-45054

www.m2ireland.com info@m2ireland.com

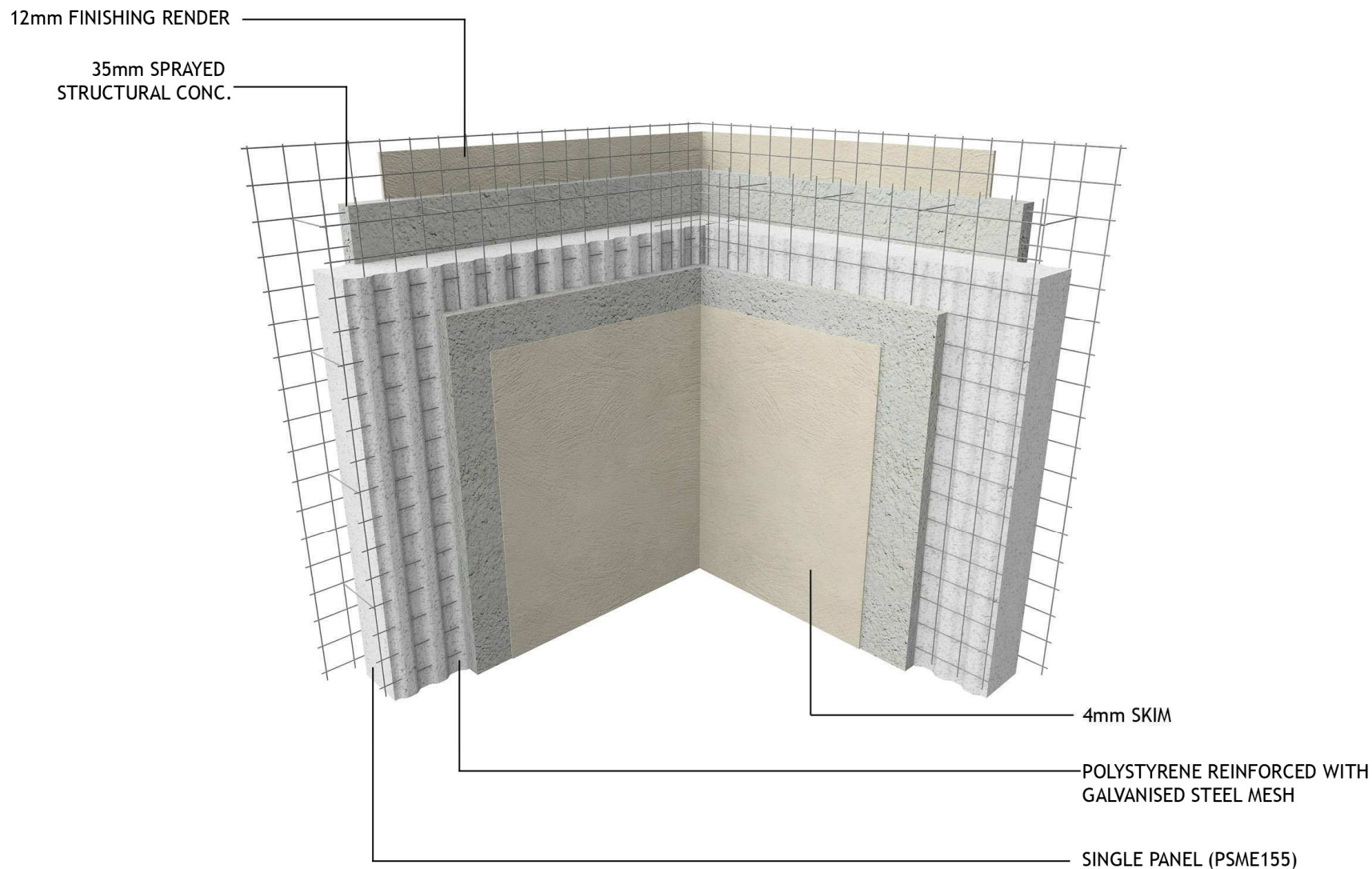


PARTY WALL CONSTRUCTION

BOTLEY LANE, PORTARLINGTON, CO. OFFALY, REPUBLIC OF IRELAND

Tel: +353/0502-45000 Fax: +353/0502-45054

www.m2ireland.com info@m2ireland.com

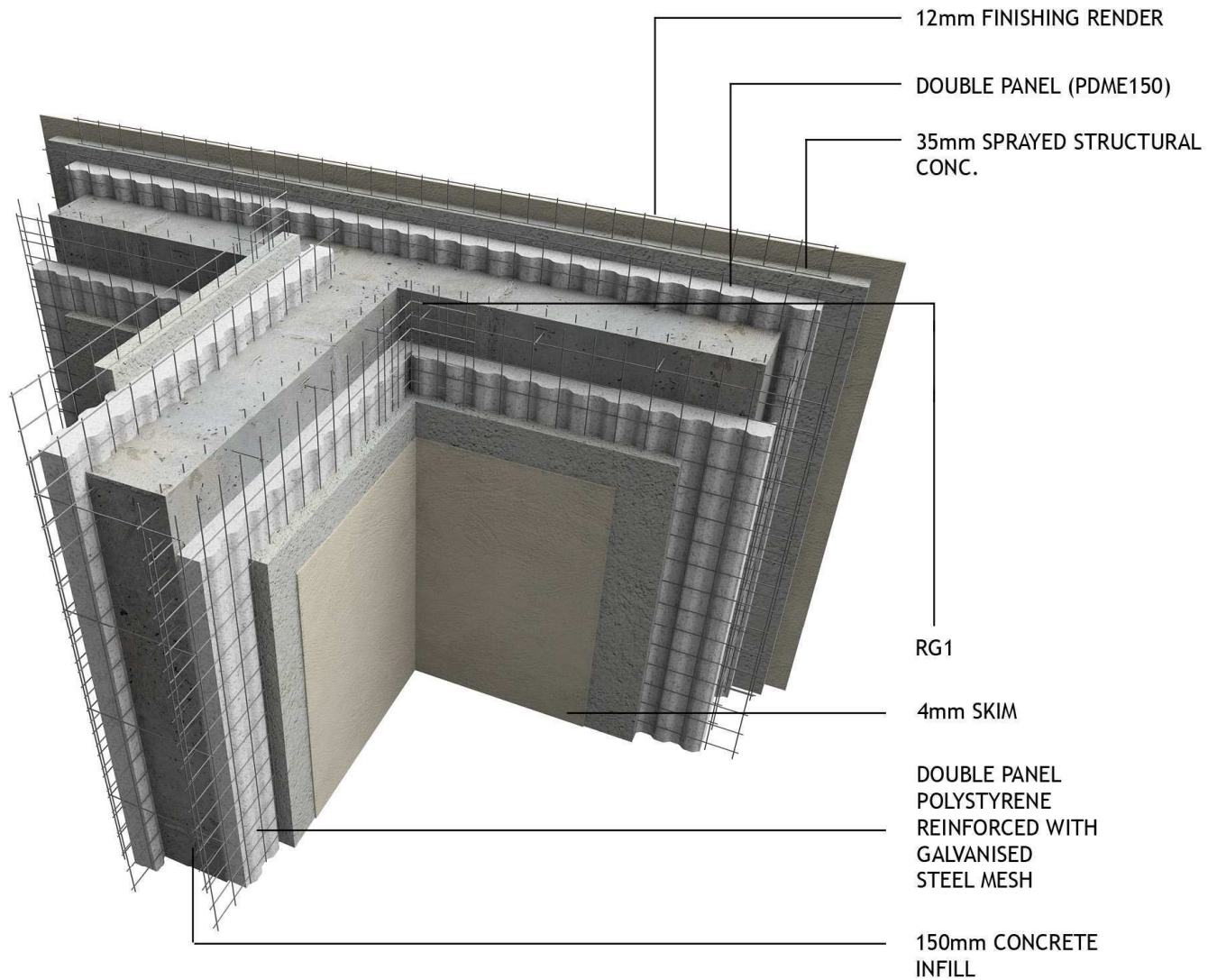


PARTY WALL CONSTRUCTION

BOTLEY LANE, PORTARLINGTON, CO. OFFALY, REPUBLIC OF IRELAND

Tel: +353/0502-45000 Fax: +353/0502-45054

www.m2ireland.com info@m2ireland.com

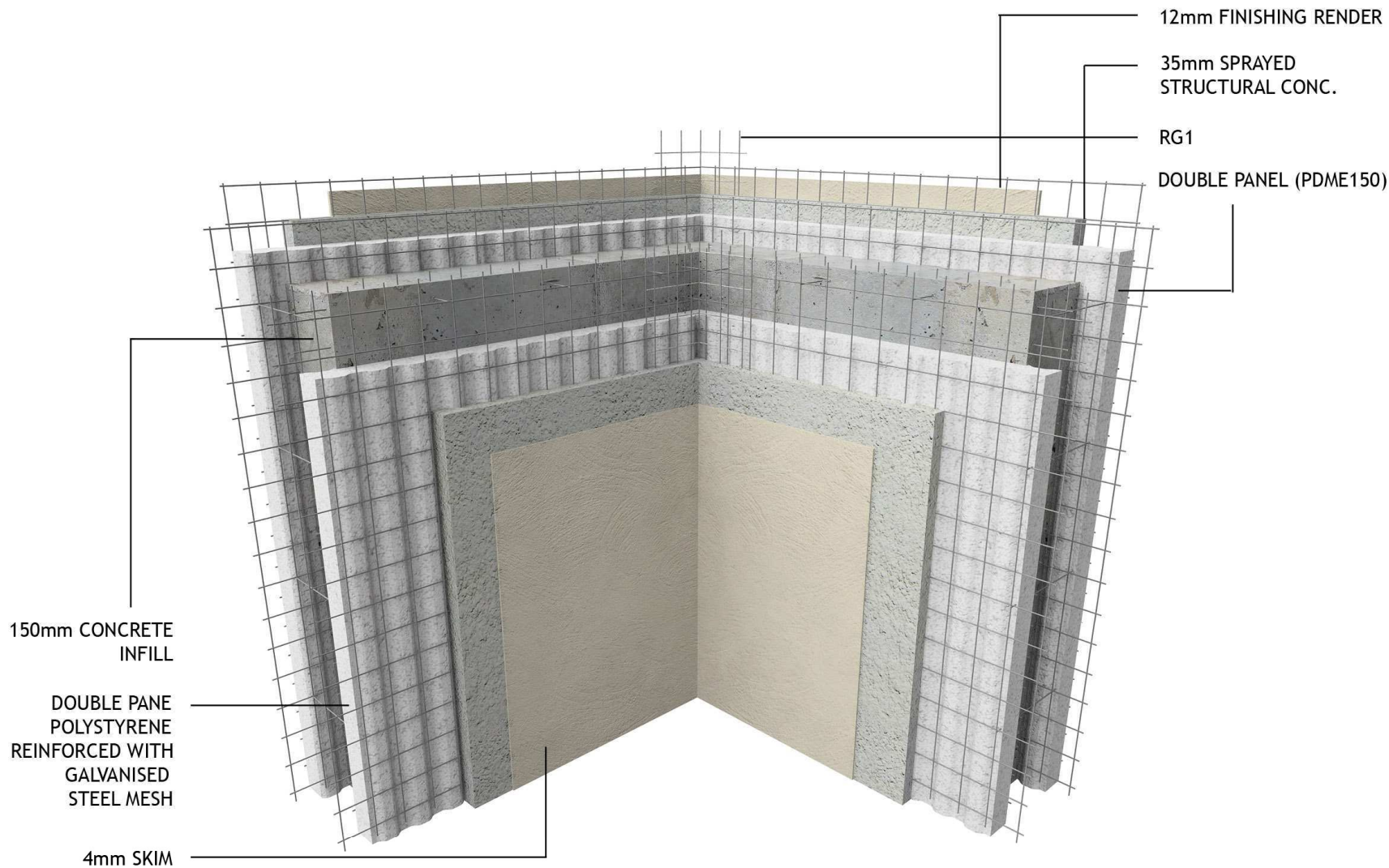


PARTY WALL CONSTRUCTION

BOTLEY LANE, PORTARLINGTON, CO. OFFALY, REPUBLIC OF IRELAND

Tel: +353/0502-45000 Fax: +353/0502-45054

www.m2ireland.com info@m2ireland.com

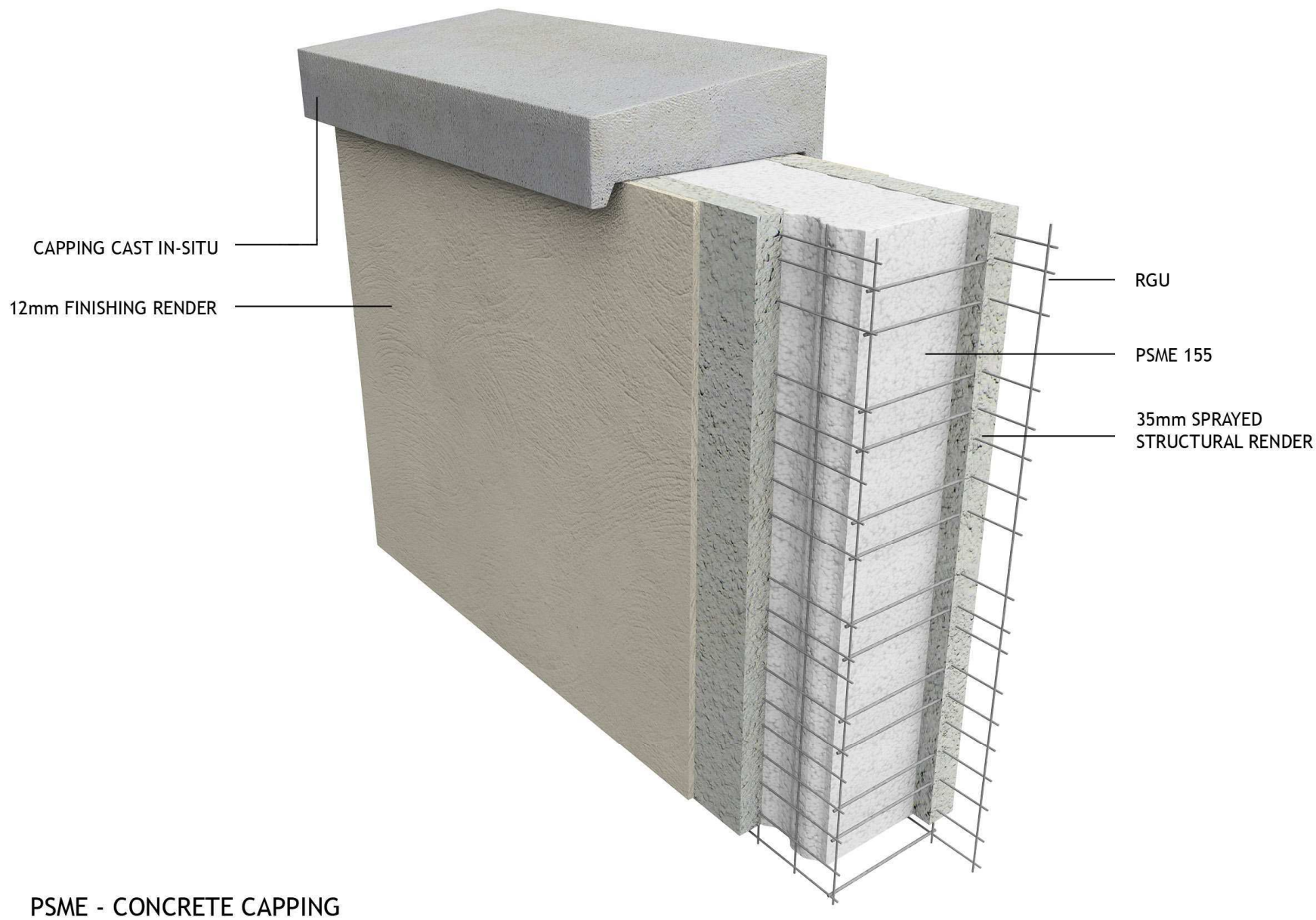


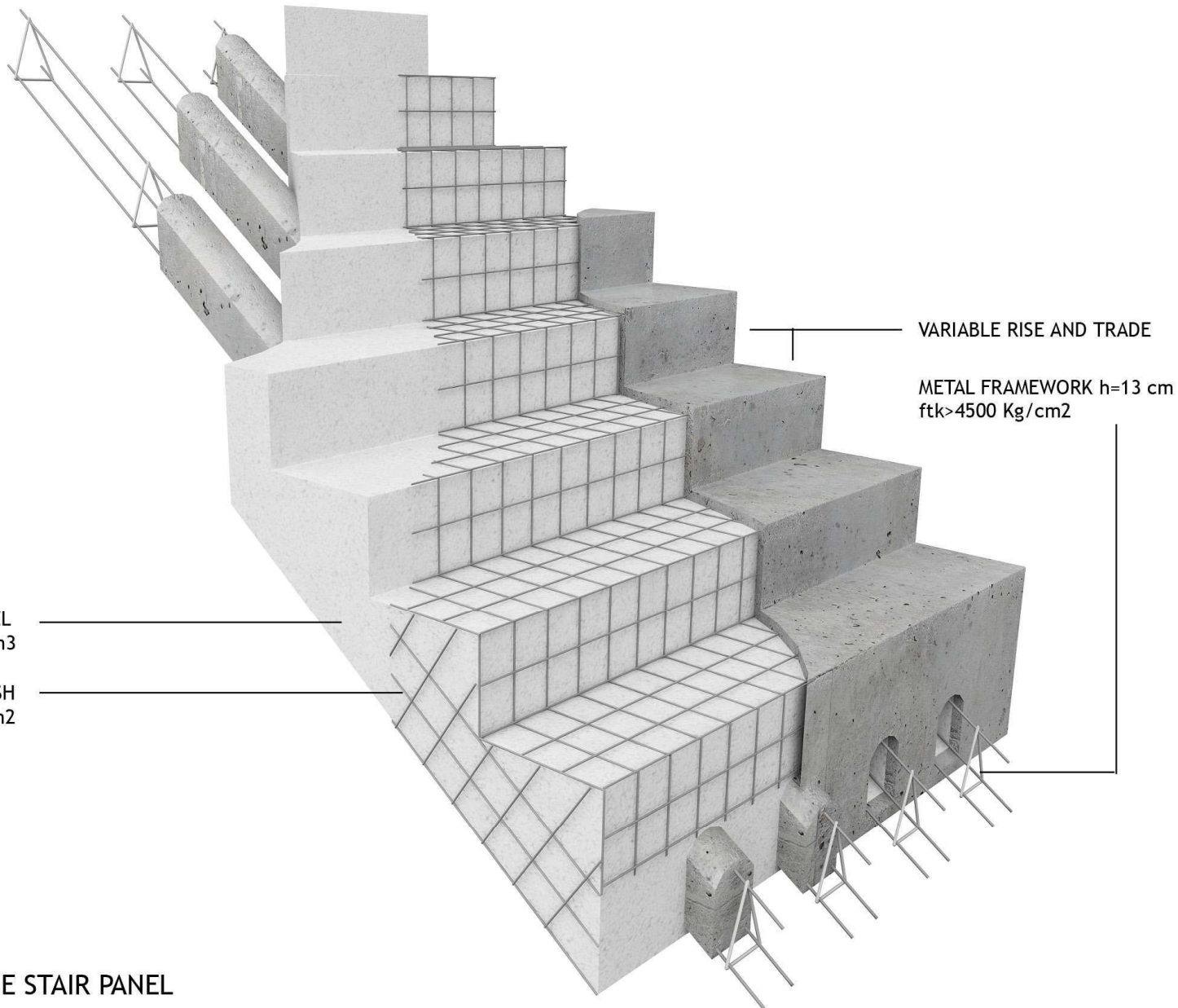
PARTY WALL CONSTRUCTION

BOTLEY LANE, PORTARLINGTON, CO. OFFALY, REPUBLIC OF IRELAND

Tel: +353/0502-45000 Fax: +353/0502-45054

www.m2ireland.com info@m2ireland.com





POLYSTYRENE PANEL
dens. 15Kg/m³

ELECTROWELDED MESH
ftk>6000 Kg/cm²

VARIABLE RISE AND TRADE

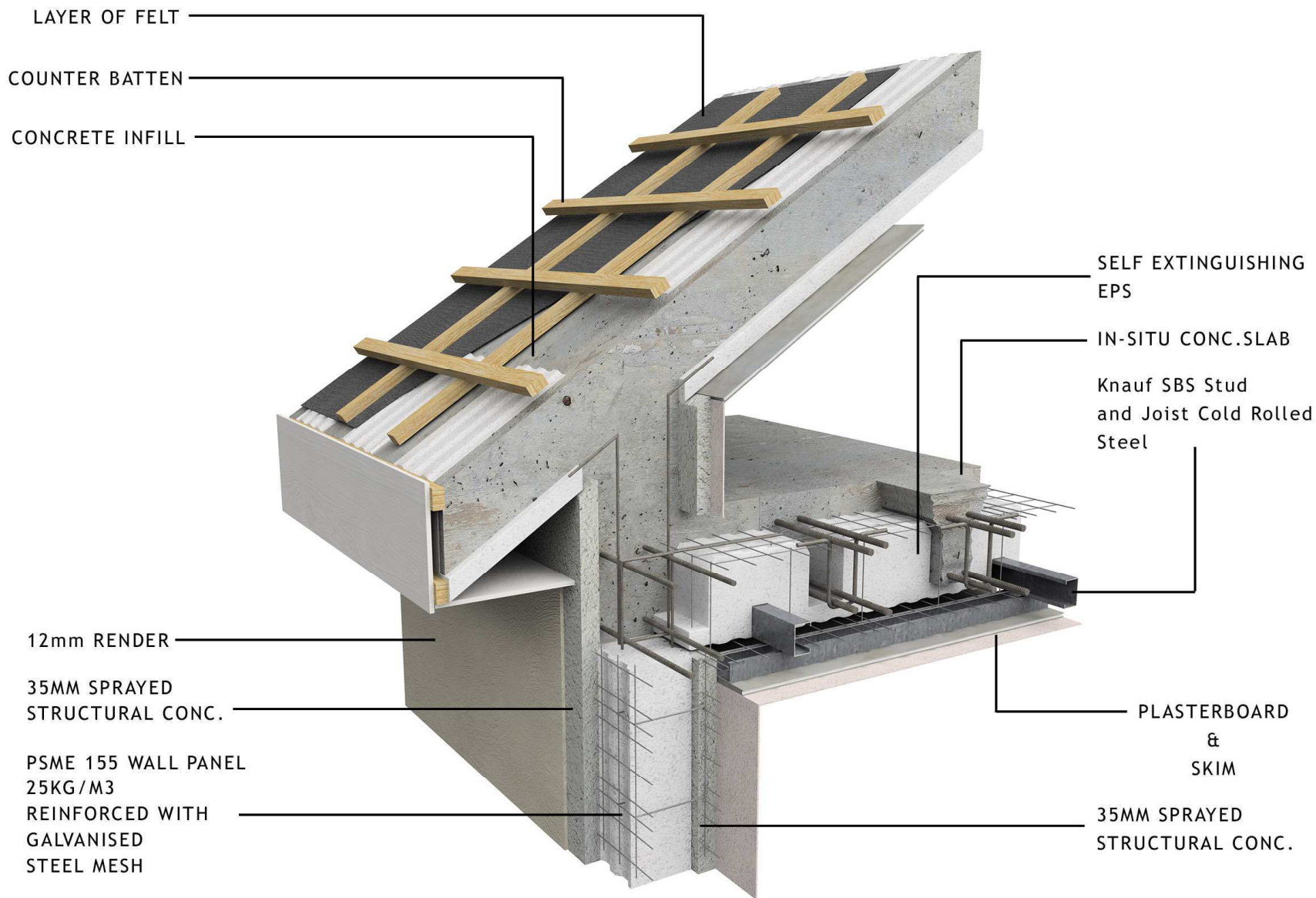
METAL FRAMEWORK h=13 cm
ftk>4500 Kg/cm²

PSSCE - EMMEDUE STAIR PANEL

BOTLEY LANE, PORTARLINGTON, CO. OFFALY, REPUBLIC OF IRELAND

Tel: +353/0502-45000 Fax: +353/0502-45054

www.m2ireland.com info@m2ireland.com

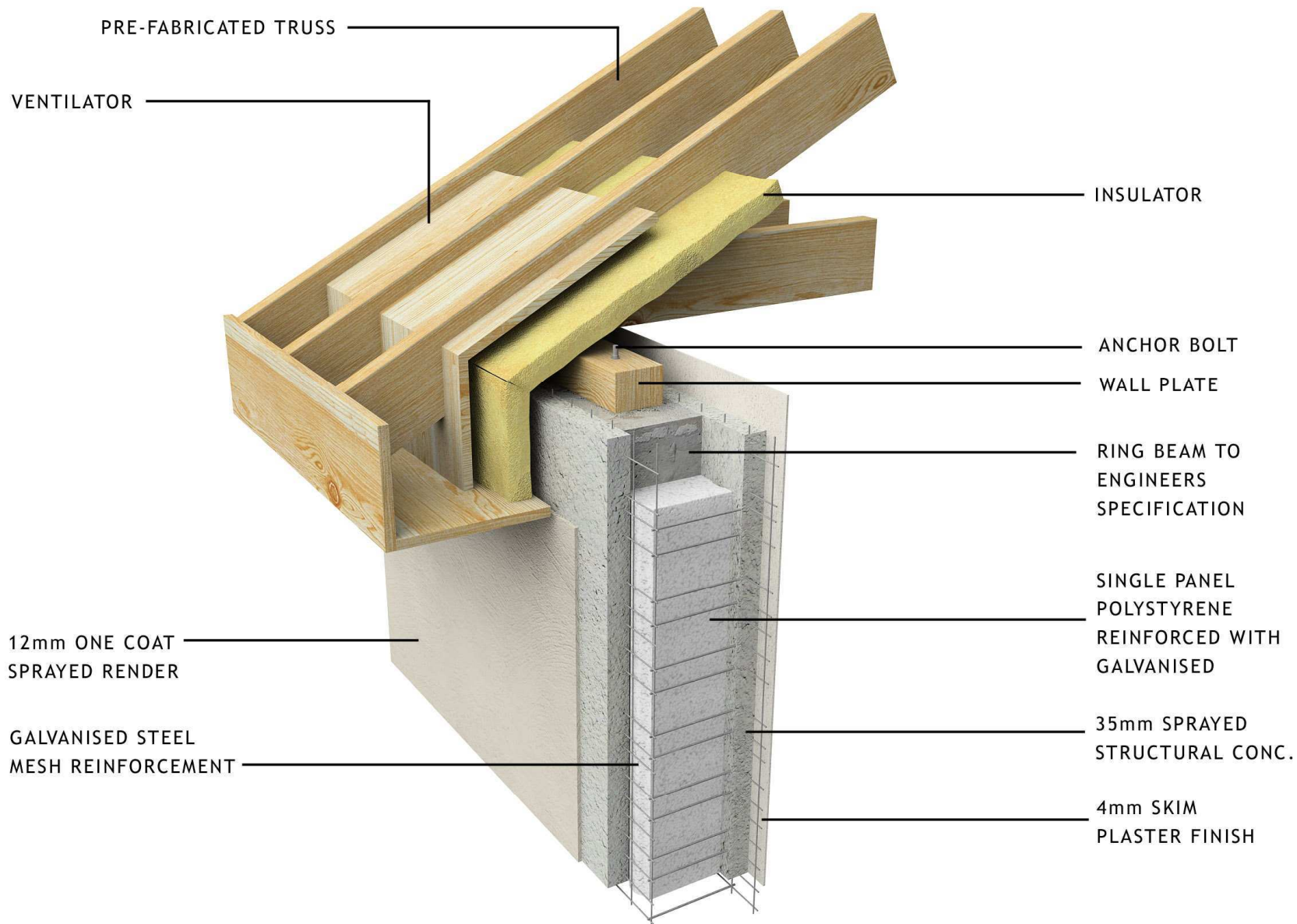


EMMEDUE ROOF PANEL 3 POTS REINFORCED

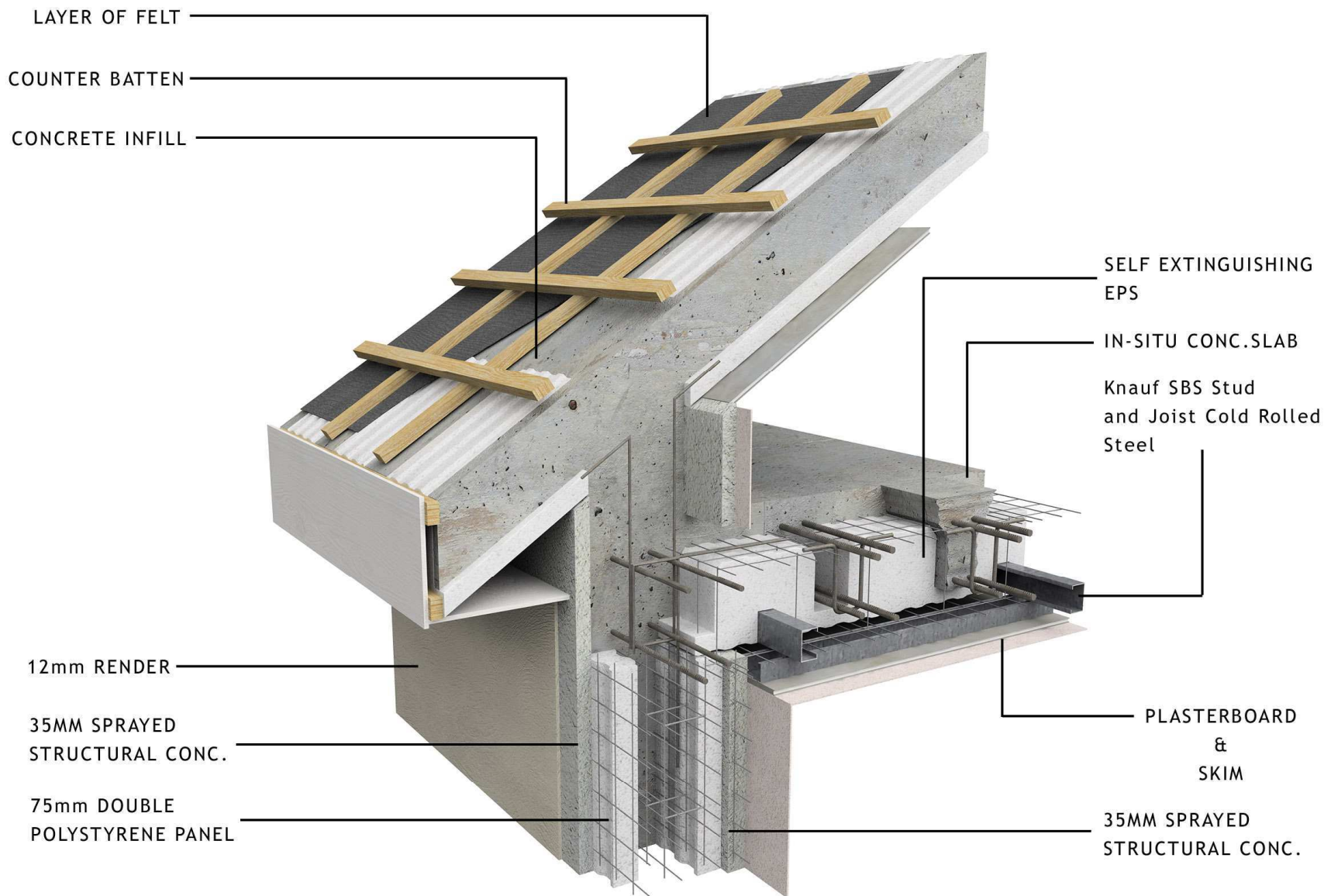
BOTLEY LANE, PORTARLINGTON, CO. OFFALY, REPUBLIC OF IRELAND

Tel: +353/0502-45000 Fax: +353/0502-45054

www.m2ireland.com info@m2ireland.com



TRADITIONAL ROOF CONSTRUCTION

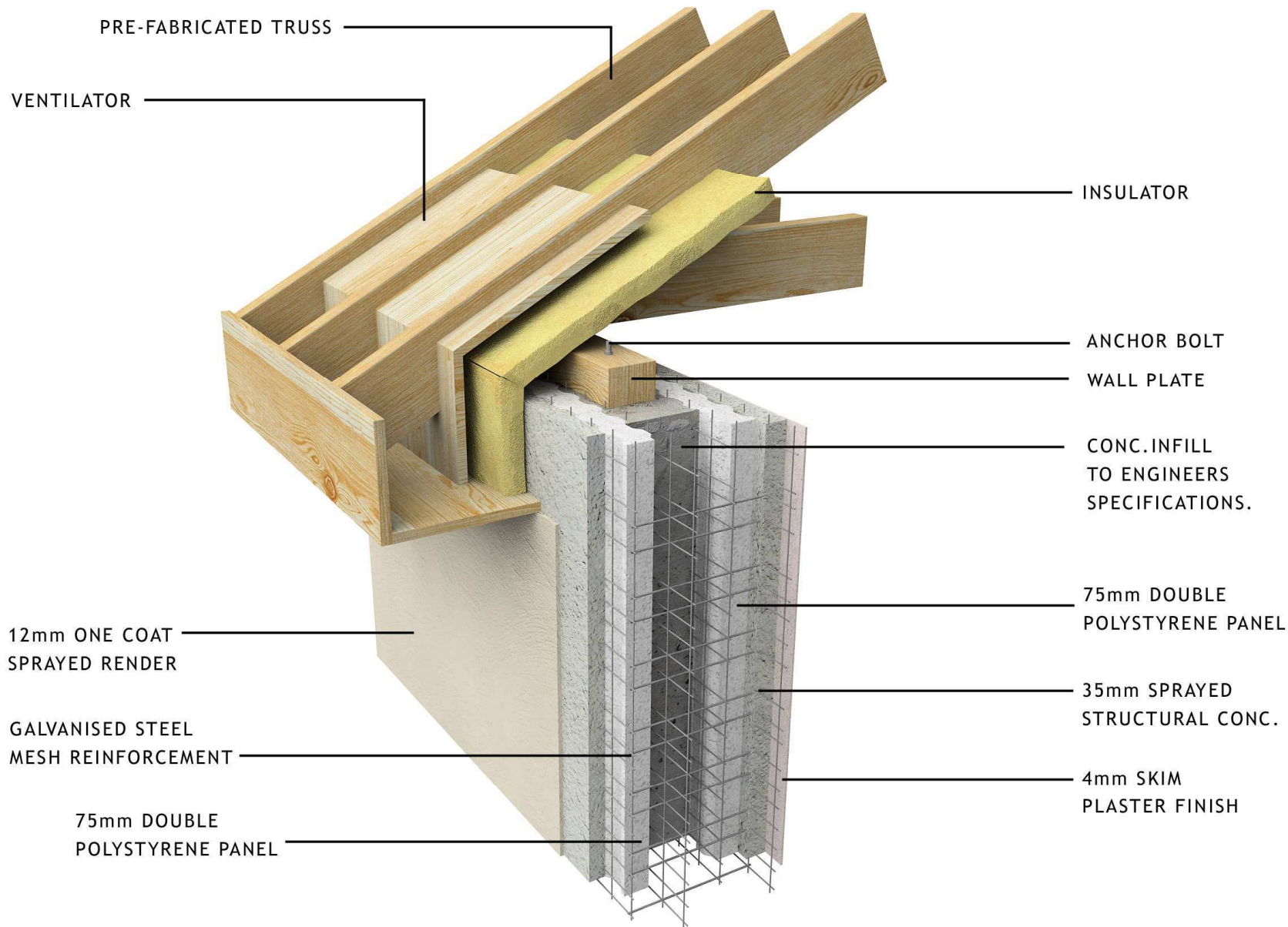


EMMEDUE ROOF PANEL 3 POTS REINFORCED

BOTLEY LANE, PORTARLINGTON, CO. OFFALY, REPUBLIC OF IRELAND

Tel: +353/0502-45000 Fax: +353/0502-45054

www.m2ireland.com info@m2ireland.com

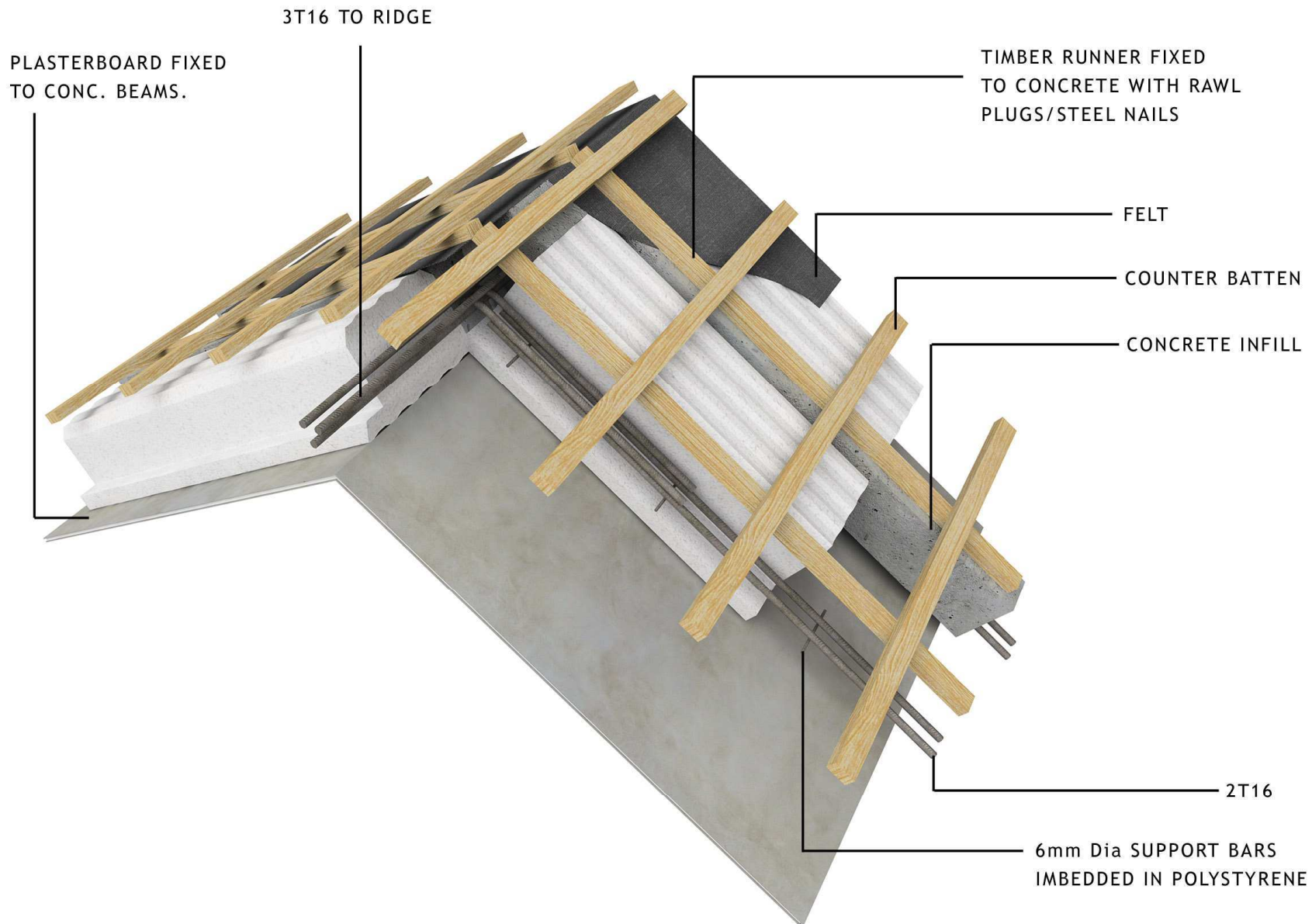


TRADITIONAL ROOF CONSTRUCTION

BOTLEY LANE, PORTARLINGTON, CO. OFFALY, REPUBLIC OF IRELAND

Tel: +353/0502-45000 Fax: +353/0502-45054

www.m2ireland.com info@m2ireland.com

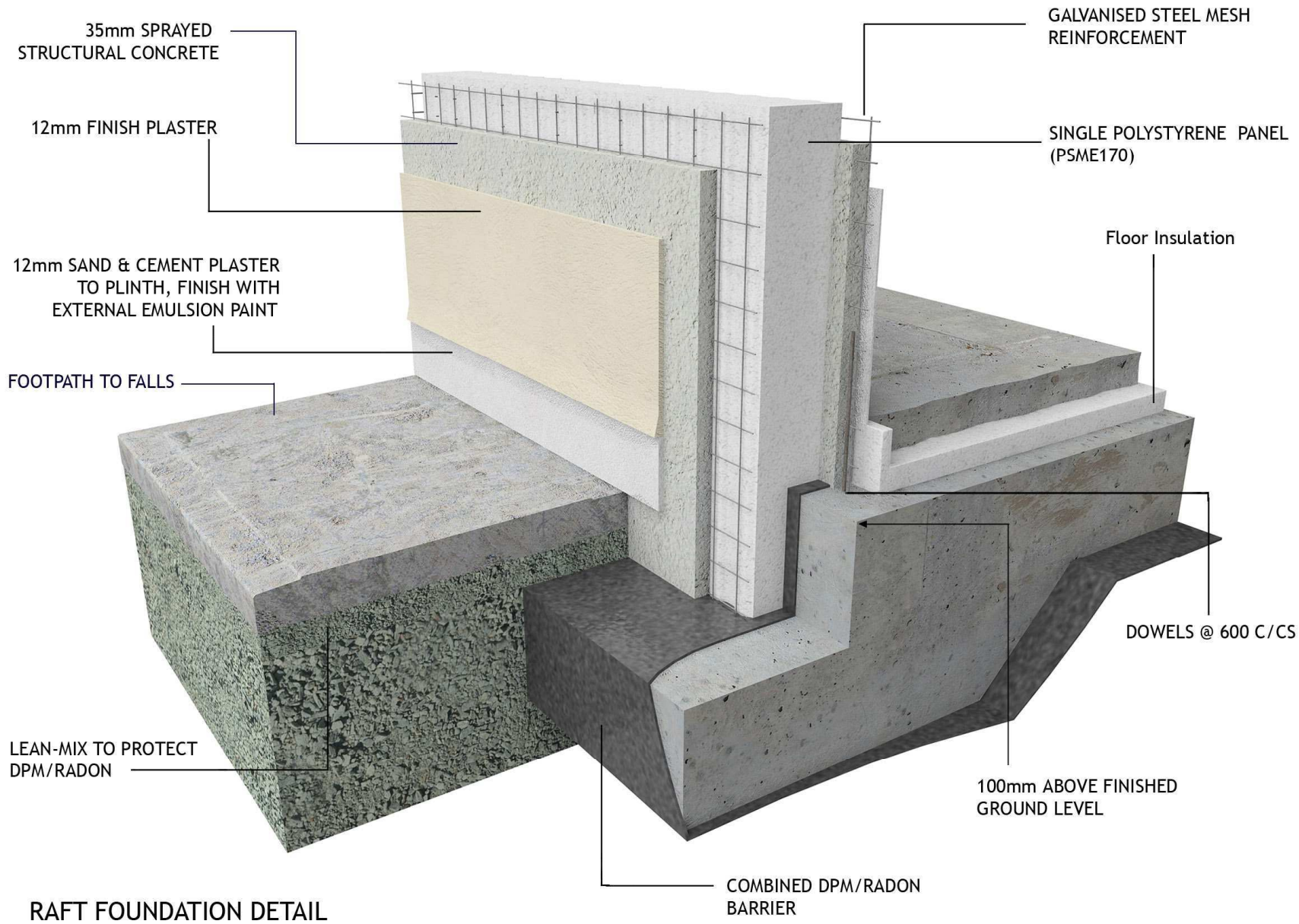


EMMEDUE ROOF PANEL 3 POTS

BOTLEY LANE, PORTARLINGTON, CO. OFFALY, REPUBLIC OF IRELAND

Tel: +353/0502-45000 Fax: +353/0502-45054

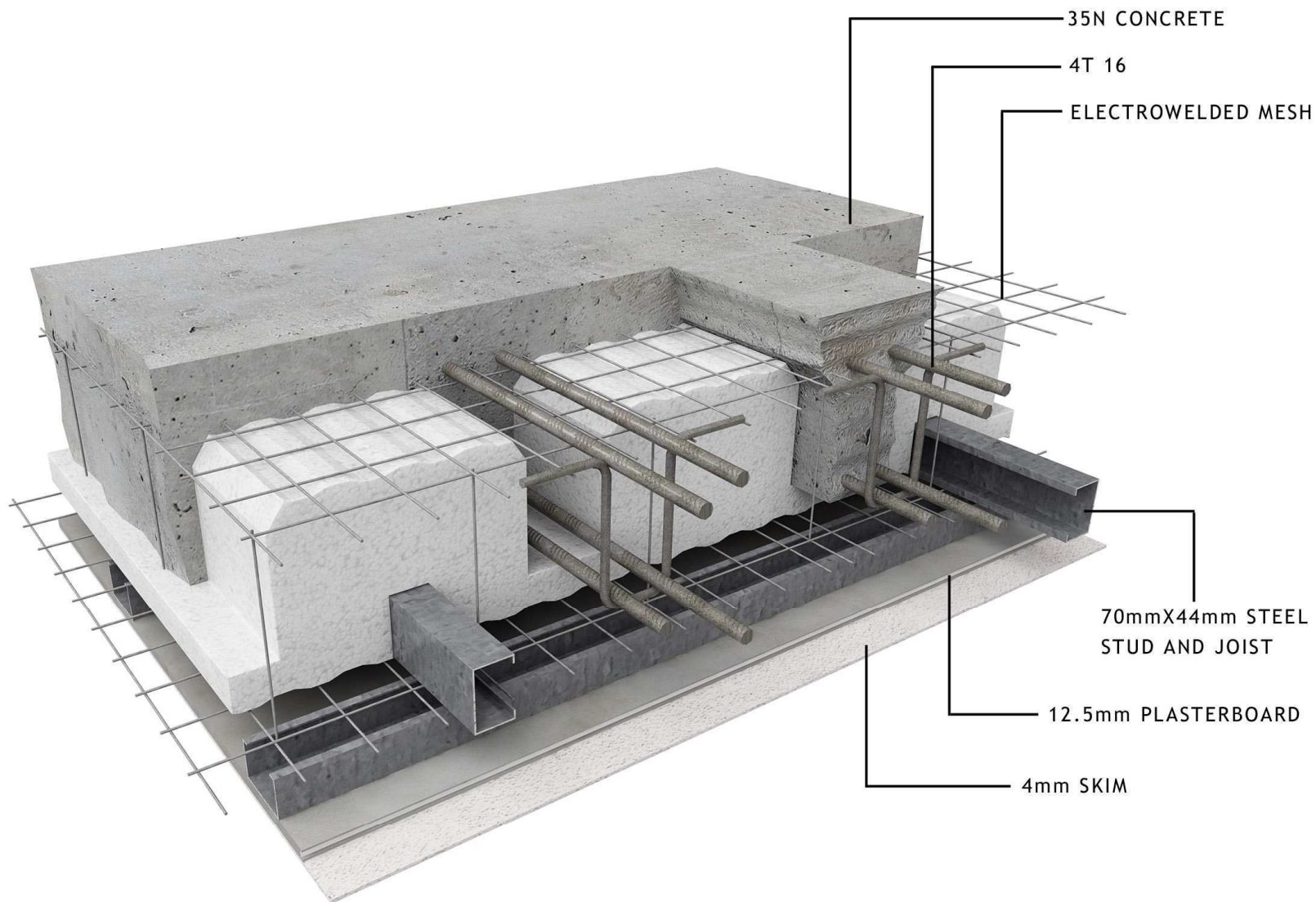
www.m2ireland.com info@m2ireland.com



BOTLEY LANE, PORTARLINGTON, CO. OFFALY, REPUBLIC OF IRELAND

Tel: +353/0502-45000 Fax: +353/0502-45054

www.m2ireland.com info@m2ireland.com

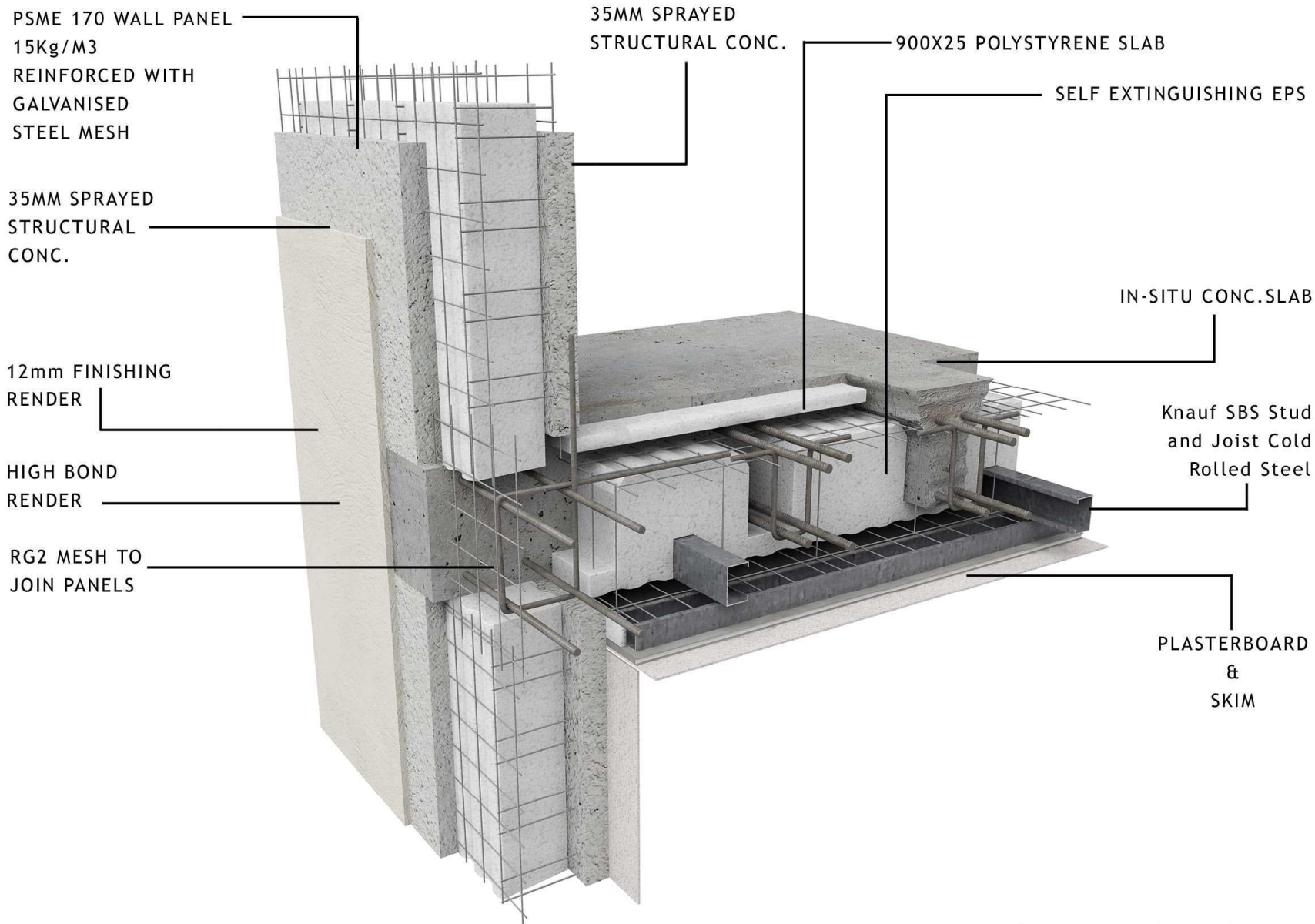


PSSG3E RC- EMMEDUE FLOOR PANEL 3 POTS REINFORCED

BOTLEY LANE, PORTARLINGTON, CO. OFFALY, REPUBLIC OF IRELAND

Tel: +353/0502-45000 Fax: +353/0502-45054

www.m2ireland.com info@m2ireland.com



PSME170 WALL PANEL /
PSSG3E_R - EMMEDUE FLOOR PANEL 3

BOTLEY LANE, PORTARLINGTON, CO. OFFALY, REPUBLIC OF IRELAND

Tel: +353/0502-45000 Fax: +353/0502-45054

www.m2ireland.com info@m2ireland.com

PDME 150 WALL PANEL
REINFORCED WITH
GALVANISED
STEEL MESH

35MM SPRAYED
STRUCTURAL CONC.

4MM SKIM

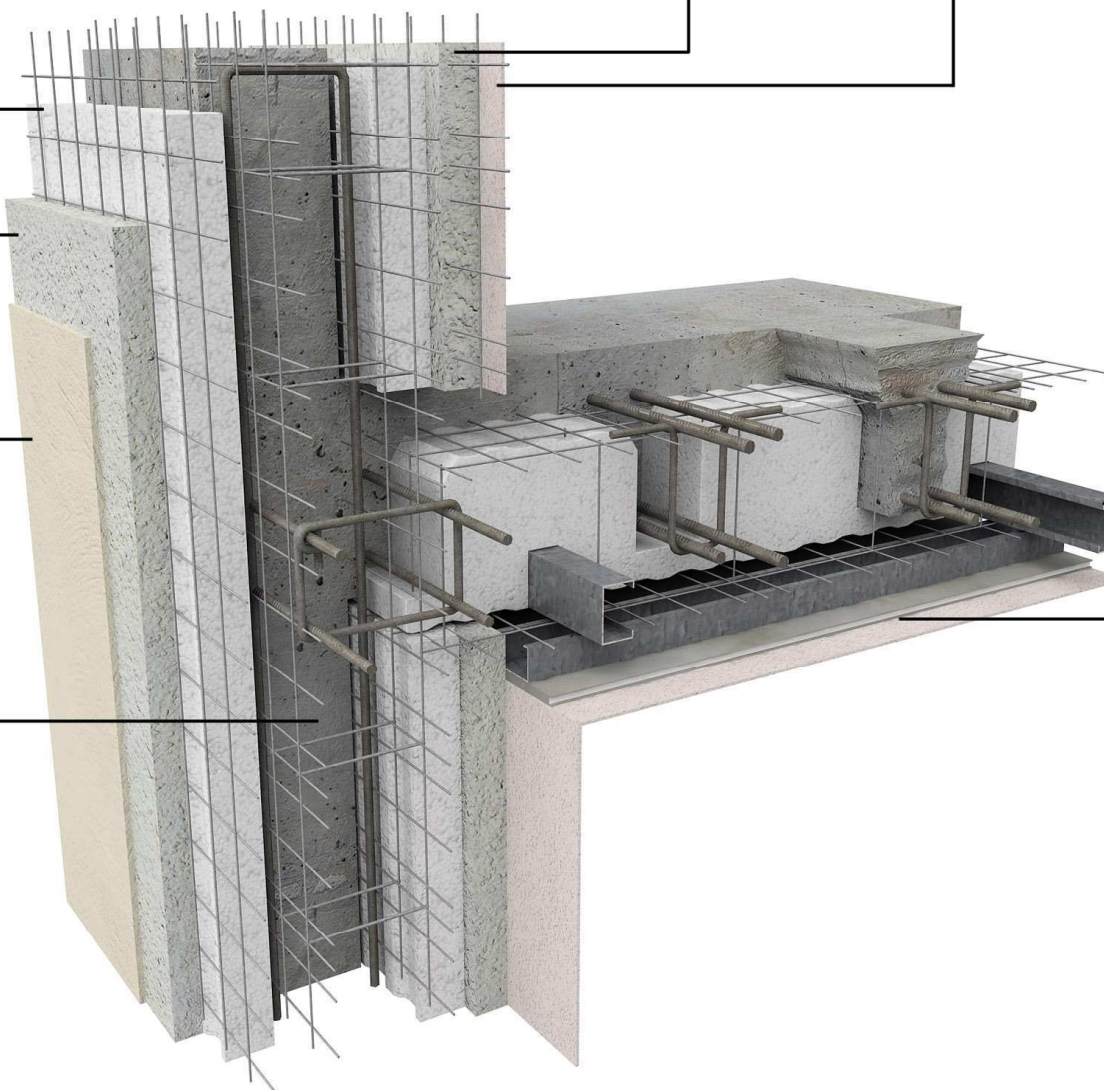
35MM SPRAYED
STRUCTURAL
CONC.

Knauf SBS Stud
and Joist Cold
Rolled Steel

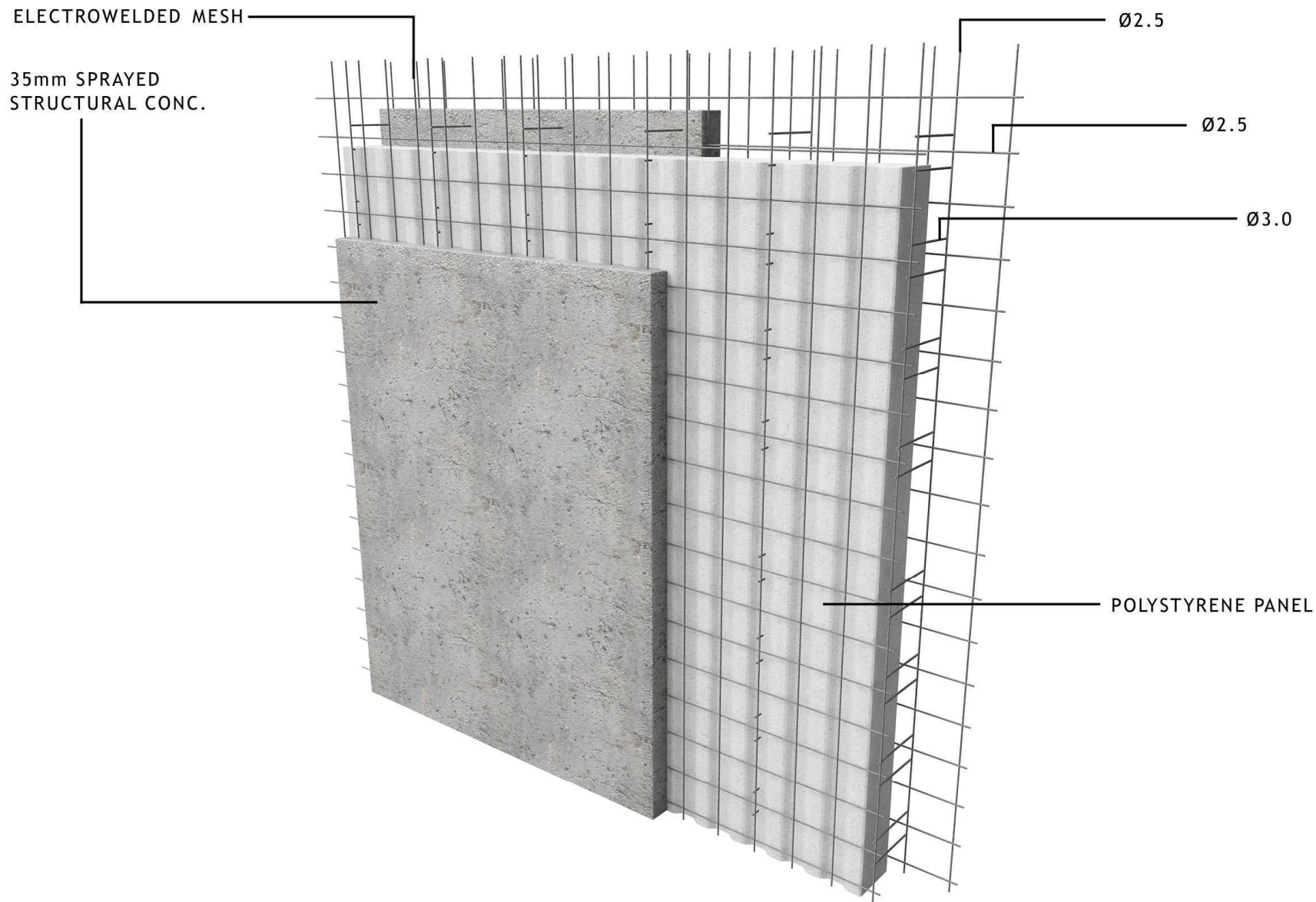
12mm FINISHING
RENDER

150MM CONC.
INFILL

PLASTERBOARD
&
SKIM



PDME150 WALL PANEL /
PSSG3E_R - EMMEDUE FLOOR PANEL 3

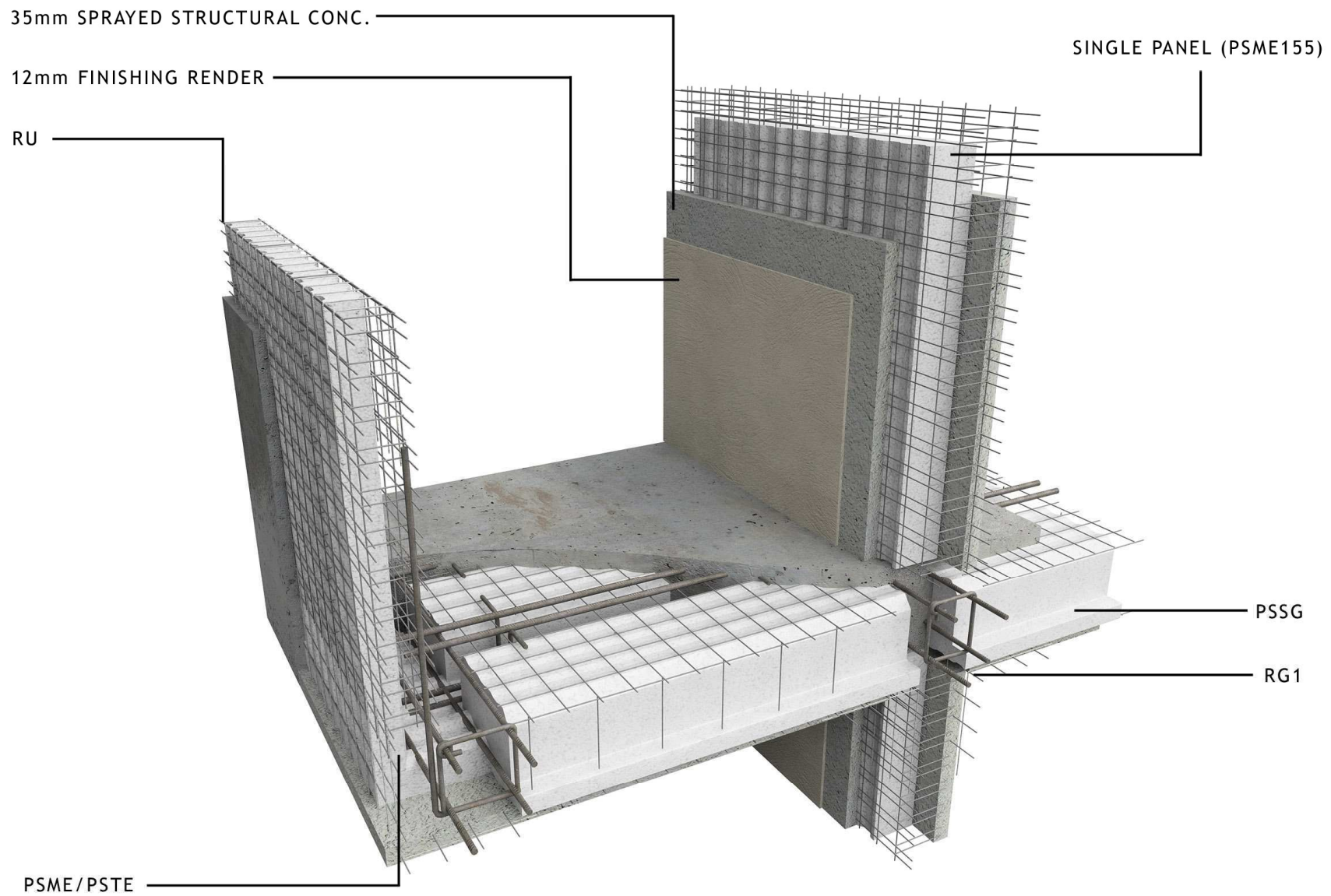


PSME 2.5 - EMMEDUE BEARING SINGLE PANEL
(VAR.THICK. FROM.40 TO 200 mm.)

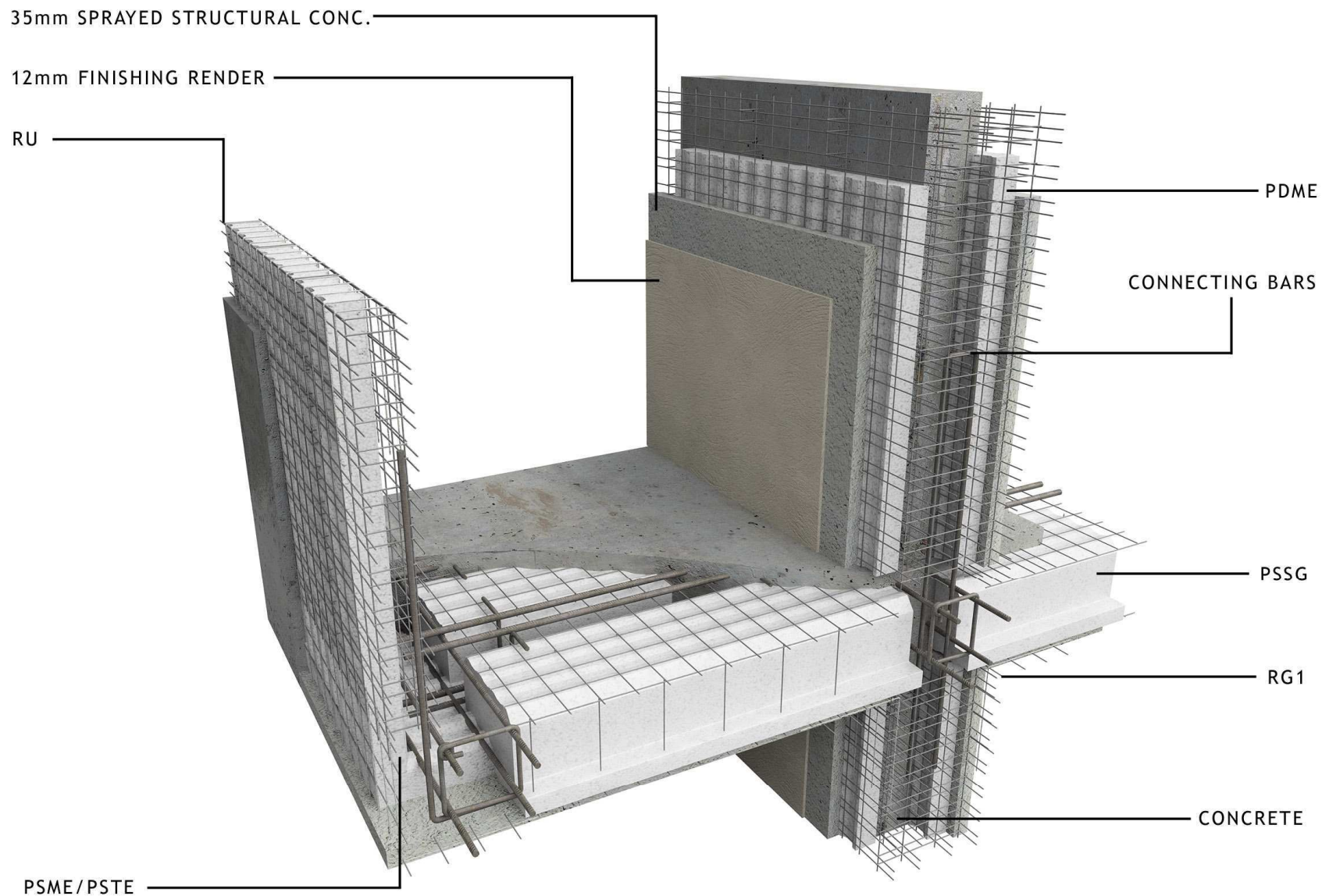
BOTLEY LANE, PORTARLINGTON, CO. OFFALY, REPUBLIC OF IRELAND

Tel: +353/0502-45000 Fax: +353/0502-45054

www.m2ireland.com info@m2ireland.com



DETAIL OF BALCONY WITH PSME



DETAIL OF BALCONY WITH PDME