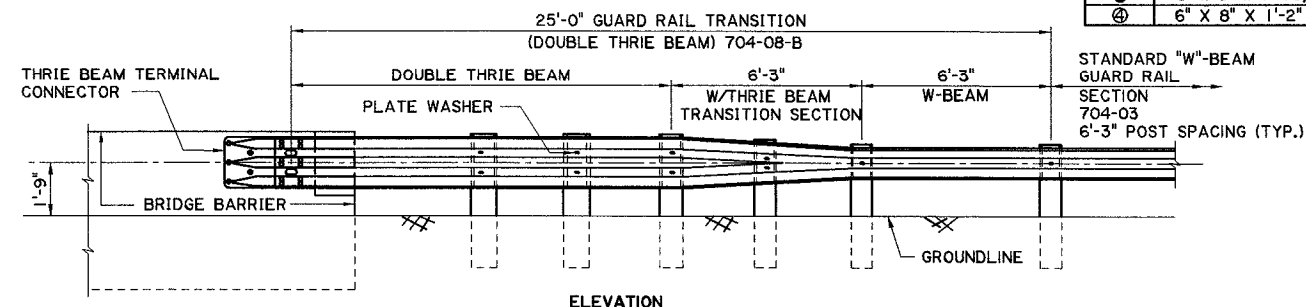
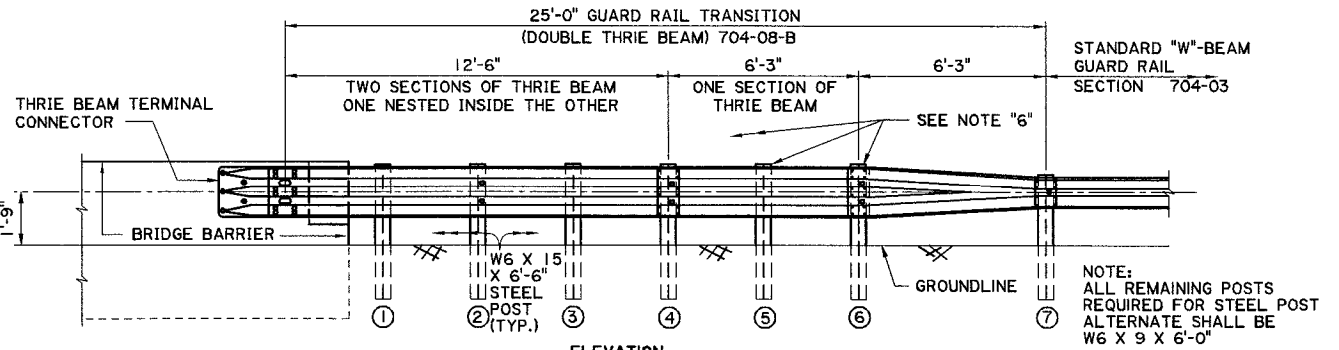
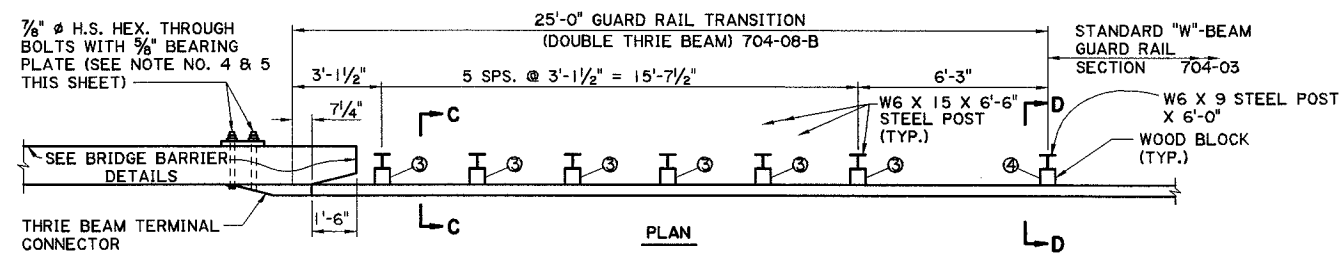


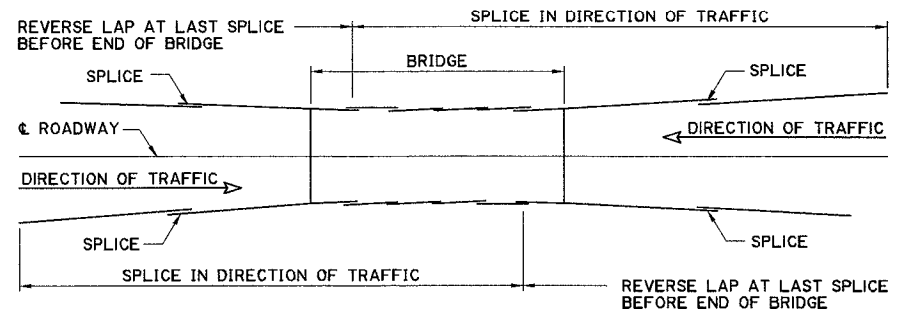
WOOD POST & BLOCK DIMENSIONS	
①	10" X 10" X 6"
②	8" X 8" X 6"
③	6" X 8" X 1'-10 1/2"
④	6" X 8" X 1'-2"



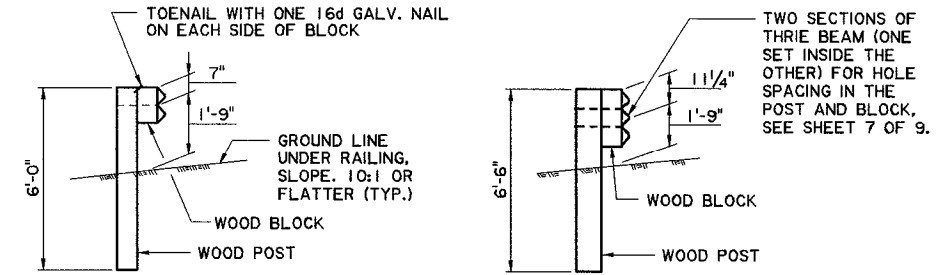
TIMBER POST ALTERNATE



STEEL POST ALTERNATE

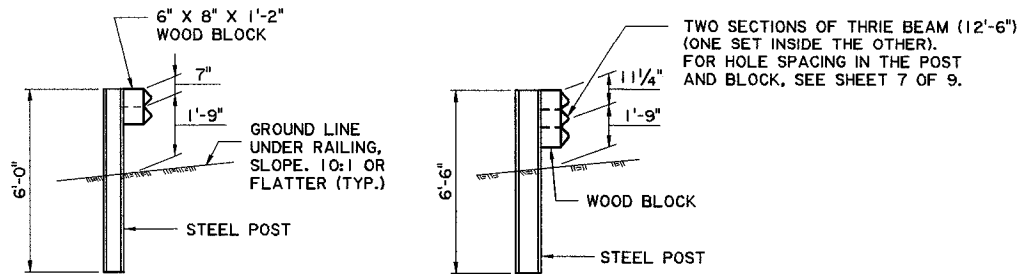


LAYOUT SHOWING DIRECTION OF GUARD RAIL SPLICE FOR TWO WAY TRAFFIC



SECTION B-B

SECTION A-A

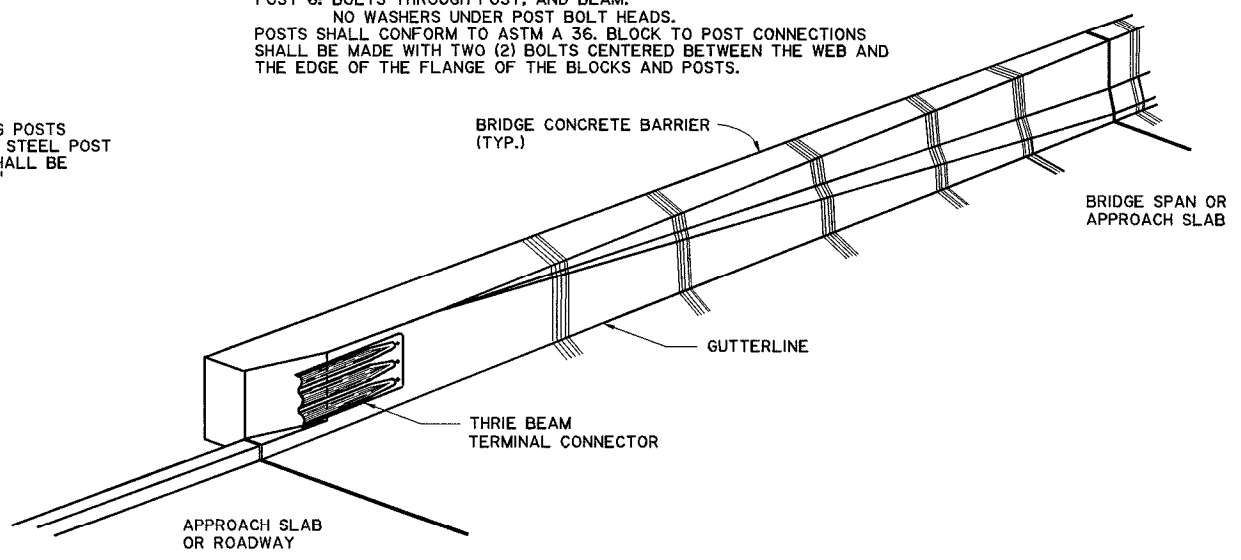


SECTION D-D

SECTION C-C

NOTES

1. THIS GUARD RAIL TRANSITION IS APPROPRIATE FOR CONNECTION TO A FLARED BACK VERTICAL CONCRETE SHAPE AS SHOWN.
2. BRIDGE RAIL ENDS AND BRIDGE PARAPETS MUST BE OF ADEQUATE STRENGTH TO ACCEPT FULL IMPACT LOADING AND SHALL BE DESIGNED CONSISTENT WITH AASHTO STANDARD SPECIFICATIONS FOR HIGHWAY BRIDGES, LATEST EDITION.
3. STANDARD BARRIER HARDWARE HAS BEEN USED TO DEVELOP THIS GUARD RAIL TRANSITION.
4. 7/8" & H.S. BOLTS SHALL BE ASTM A449. GALVANIZING SHALL BE IN ACCORDANCE WITH ASTM A 153.
5. FOR 5/8" STEEL BEARING PLATE, SEE SHEET 9 OF 9. (GALV. STEEL Ogee WASHERS MAY BE USED IN LIEU OF THE STEEL BEARING PLATE.)
6. STEEL POST ALTERNATE ONLY:
 POST 1: NO BOLTS
 POST 2: BOLTS THROUGH POSTS AND BEAMS. NO WASHERS UNDER POST BOLT HEADS.
 POST 3: NO BOLTS
 POST 4: SPLICE, BOLTS THROUGH POST AND BEAMS. NO WASHERS UNDER POST BOLT HEADS.
 POST 5: NO BOLTS
 POST 6: BOLTS THROUGH POST, AND BEAM. NO WASHERS UNDER POST BOLT HEADS.
 POSTS SHALL CONFORM TO ASTM A 36. BLOCK TO POST CONNECTIONS SHALL BE MADE WITH TWO (2) BOLTS CENTERED BETWEEN THE WEB AND THE EDGE OF THE FLANGE OF THE BLOCKS AND POSTS.



PERSPECTIVE SHOWING BARRIER RAIL END

NOTE:
FOR TRANSITION LENGTH & DETAILS OF THE CONCRETE BARRIER, SEE BRIDGE BARRIER DETAILS.

SHEET NUMBER

DESIGNED BY: G. MAGEE
 CHECKED BY: P. FOSSIER
 DATE: MAY, 2001
 SHEET: 3 OF 9

REVISION DESCRIPTION

APPROVED BY: [Signature]
 DATE: 6/14/01
 Original Signed by Chief Engineer

BRIDGE AND STRUCTURAL DESIGN