

DEPAUL COMMUNITY HEALTH CENTERS
 5630 Read Blvd., New Orleans, LA 70127

*This sign is designed to withstand 130 MPH wind load.
 *This sign will be attached using 3/8" thru-bolts or appropriately sized hardware as necessary.

EXISTING



PROPOSED E04 & E05





DEPAUL COMMUNITY HEALTH CENTERS ASC-PL-CUSTOM
 SIGN AREA: 72.02 SQ.FT.



ASC-CUSTOM
 SIGN AREA:
 ACTUAL SIGN AREA: 27.49 SQ.FT.
 BOXED AREA: 35 SQ.FT.

**TOTAL PROPOSED
 SIGN AREA:
 107.02 SQ. FT.**

Project Title	Sign Type	
ASCENSION	VARIOUS	
Date		
Address: 5630 Read Blvd. New Orleans, LA 70127		SITE ID#
		DPC-018

DAMMON

ENGINEERING, INC.

L O U I S I A N A & M I S S I S S I P P I

Slidell, Louisiana www.dammonengineering.com
 Ph: 985-649-5832 Fax: 985-641-5950 info@dammonengineering.com




DEPAUL COMMUNITY HEALTH CENTERS
5630 Read Blvd., New Orleans, LA 70127

*This sign is designed to withstand 130 MPH wind load.
*This sign will be attached using 3/8" thru-bolts or appropriately sized hardware as necessary.

E04

NOTES:
1.) MUST BE PACKAGED IN CARDBOARD BOX
NO WOOD!

SITE: DPC-018
SIGN: E04



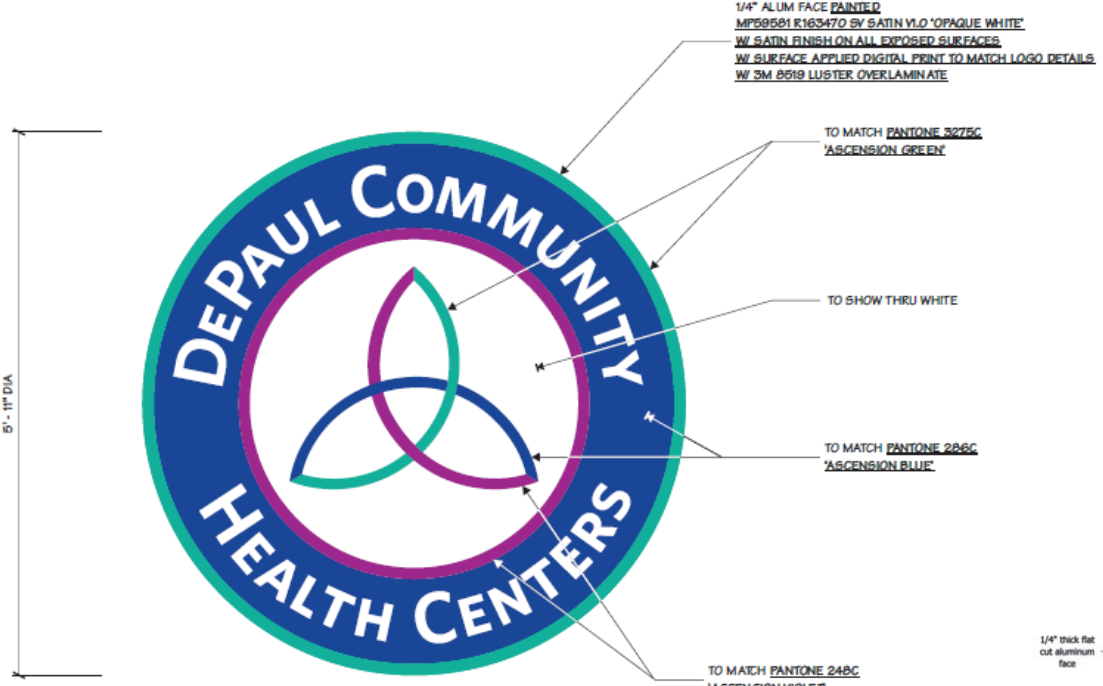
Project Title
ASCENSION

Date 10.14.19

AGI EOR: R. THOMAS
Lead Draftsman JRA
Drawn By LVL
Project Mgr. L. WILLIAMS

General Sign Specifications

Interior Exterior
 Single Faced Double Faced
 Non-Illuminated
 Illuminated _____ Volts _____ Amps(+/-)
Location NEW ORLEANS, LA
Windload _____



6'-11" DIA

TO MATCH PANTONE 3275C 'ASCENSION GREEN'

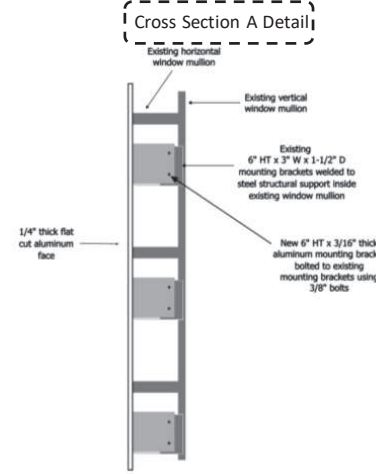
TO SHOW THRU WHITE

TO MATCH PANTONE 286C 'ASCENSION BLUE'

TO MATCH PANTONE 248C 'ASCENSION VIOLET'

1/4" ALUM FACE PAINTED
MP69581 R163470 BY SATIN V.L.O 'OPAQUE WHITE'
W/ SATIN FINISH ON ALL EXPOSED SURFACES
W/ SURFACE APPLIED DIGITAL PRINT TO MATCH LOGO DETAILS
W/ 3M 8619 LUSTER OVERLAMINATE

Cross Section A Detail



Existing horizontal window mullion

Existing vertical window mullion

Existing 6" HT x 3" W x 1-1/2" D mounting brackets welded to steel structural support inside existing window mullion

1/4" thick flat cut aluminum face

New 6" HT x 3/16" thick aluminum mounting bracket bolted to existing mounting brackets using 3/8" bolts

1 FRONT ELEVATION
3/4" = 1'-0"

Drawing Revisions	Date	Change
LVL	10.14.19	38384 - FOR INITIAL RELEASE

This document is the sole property of AGI, and all design, manufacturing, reproduction and sale rights regarding the same are expressly reserved. It is submitted under a confidential relationship, for a special purpose, and the recipient, by accepting this document assumes custody and agrees that this document will not be copied or reproduced in whole or in part, nor its contents revealed in any manner or for any purpose for which it was intended, nor any special features peculiar to this design be incorporated in other projects.

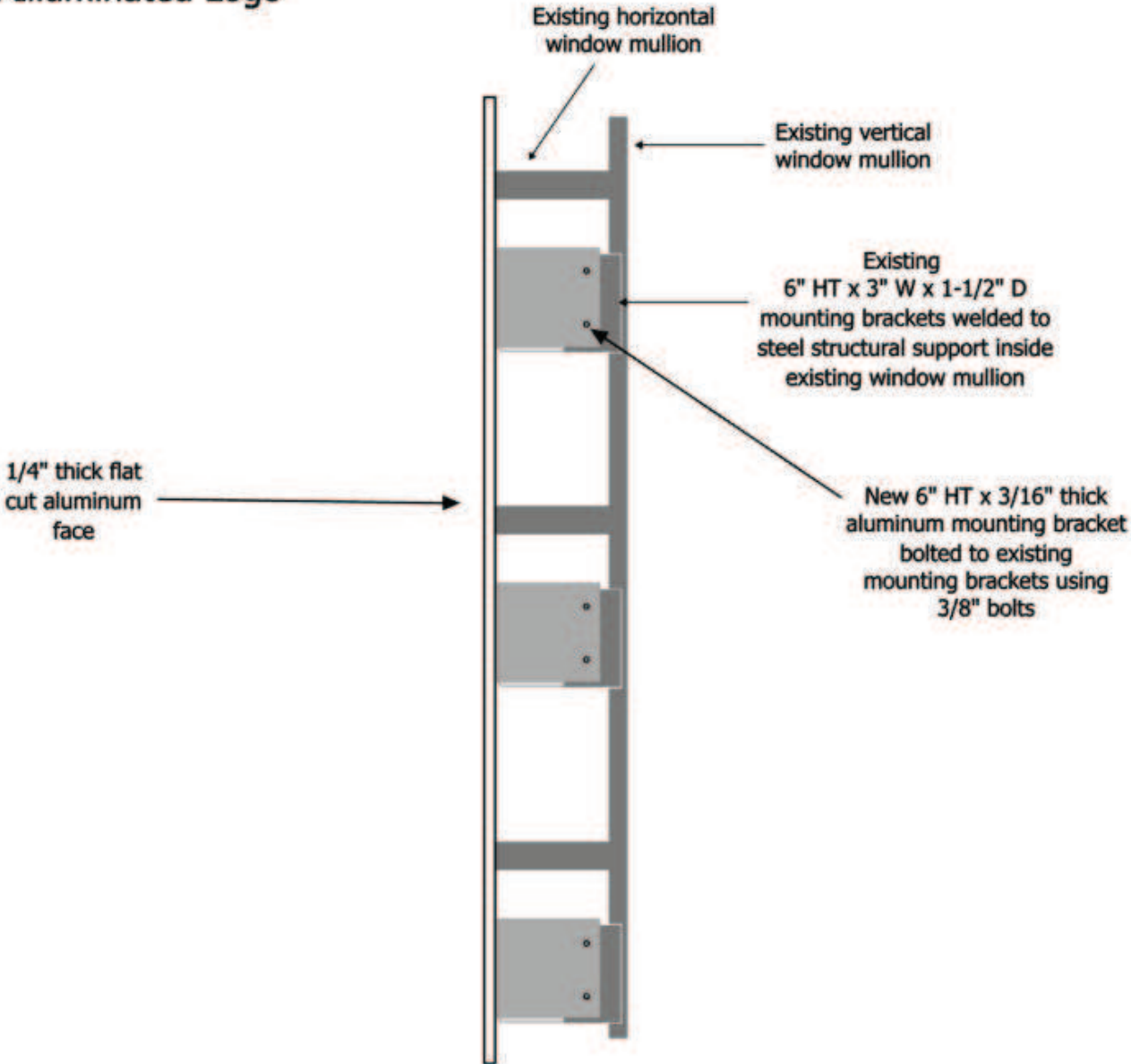


DEPAUL COMMUNITY HEALTH CENTERS
5630 Read Blvd., New Orleans, LA 70127

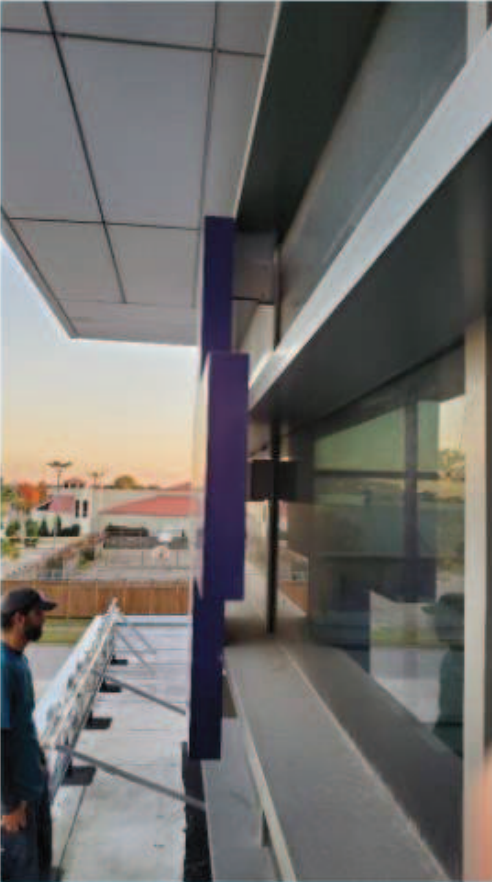
*This sign is designed to withstand 130 MPH wind load.
*This sign will be attached using 3/8" thru-bolts or appropriately sized hardware as necessary.

E04

**Enlarged Cross Section A
Non Illuminated Logo**



Existing Field Conditions



DEPAUL COMMUNITY HEALTH CENTERS
5630 Read Blvd., New Orleans, LA 70127

*This sign is designed to withstand 130 MPH wind load.
*This sign will be attached using 3/8" thru-bolts or appropriately sized hardware as necessary.

E05

NOTES:
1.) MUST BE PACKAGED IN CARDBOARD BOX
NO WOOD!

SITE: DPC-01B
SIGN: E05

Cross Section B Detail

Existing Field Conditions

Change	Drawn By	Date
01	MM	10.14.19
02	MM	10.14.19
03	MM	10.14.19
04	MM	10.14.19
05	MM	10.14.19
06	MM	10.14.19
07	MM	10.14.19
08	MM	10.14.19
09	MM	10.14.19
10	MM	10.14.19
11	MM	10.14.19
12	MM	10.14.19
13	MM	10.14.19
14	MM	10.14.19
15	MM	10.14.19
16	MM	10.14.19
17	MM	10.14.19
18	MM	10.14.19
19	MM	10.14.19
20	MM	10.14.19

General Sign Specifications

Interior Exterior
 Single Faced Double Faced
 Non-Illuminated
 Illuminated

Volts _____ Amps(4-1)

Location: New Orleans, LA

Windload: _____

AGI ENGINEERING INC.

Project Title: ASCENSION

Date: 10.14.19

AGI EOR: R. THOMAS
Lead Draftsman: JRA
Drawn By: MML/VL
Project Mgr: L. WILLIAMS

DAMMON ENGINEERING INC.

LOUISIANA PROFESSIONAL ENGINEER

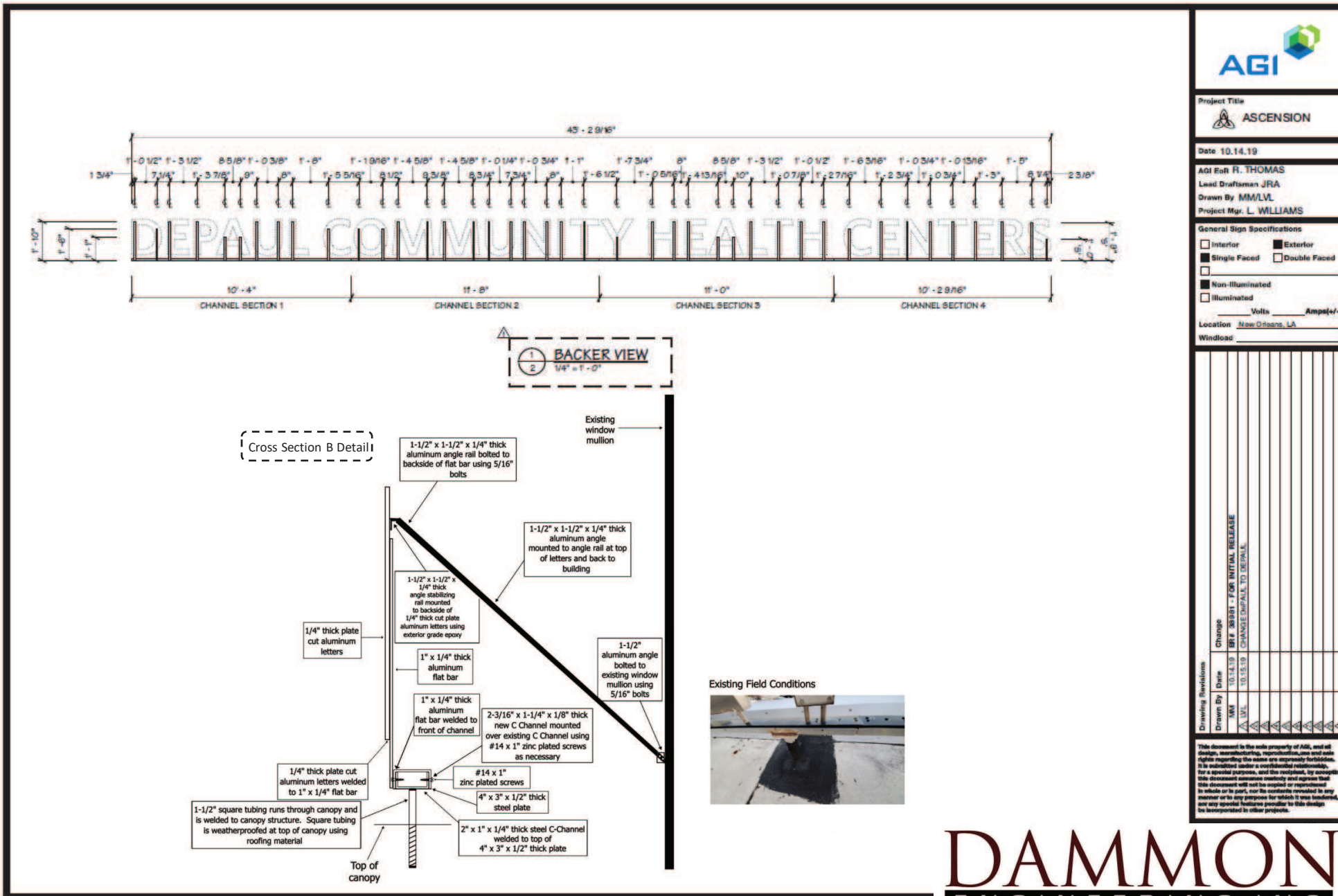
BRIAN A. MISTICH
License No. 30187

DAMMON ENGINEERING INC.
LOUISIANA PROFESSIONAL ENGINEER
BRIAN A. MISTICH
License No. 30187

DEPAUL COMMUNITY HEALTH CENTERS
5630 Read Blvd., New Orleans, LA 70127

*This sign is designed to withstand 130 MPH wind load.
*This sign will be attached using 3/8" thru-bolts or appropriately sized hardware as necessary.

E05



AGI

Project Title: **ASCENSION**

Date: 10.14.19

AGI Est R. THOMAS
Lead Draftsman JRA
Drawn By MM/LM
Project Mgr. L. WILLIAMS

General Sign Specifications

Interior Exterior
 Single Faced Double Faced
 Non-Illuminated
 Illuminated

Volts _____ Amps(+/-) _____

Location: New Orleans, LA
Windload: _____

Change	By	Date	Reason
1	MM	10-14-19	BRF 308847 - FOR INITIAL RELEASE
2	MM	10-15-19	CHANGE DEFAULT TO DETAIL

Drawing Revisions

This document is the sole property of AGI, and all design, manufacturing, reproduction and sales rights regarding the same are expressly forbidden. It is submitted under a confidential relationship. For a special purpose, and the recipient, by accepting this document assumes custody and agrees that this document will not be copied or reproduced in whole or in part, nor its contents revealed to any person or in any manner for which it was intended, nor any special features peculiar to this design be incorporated in other projects.

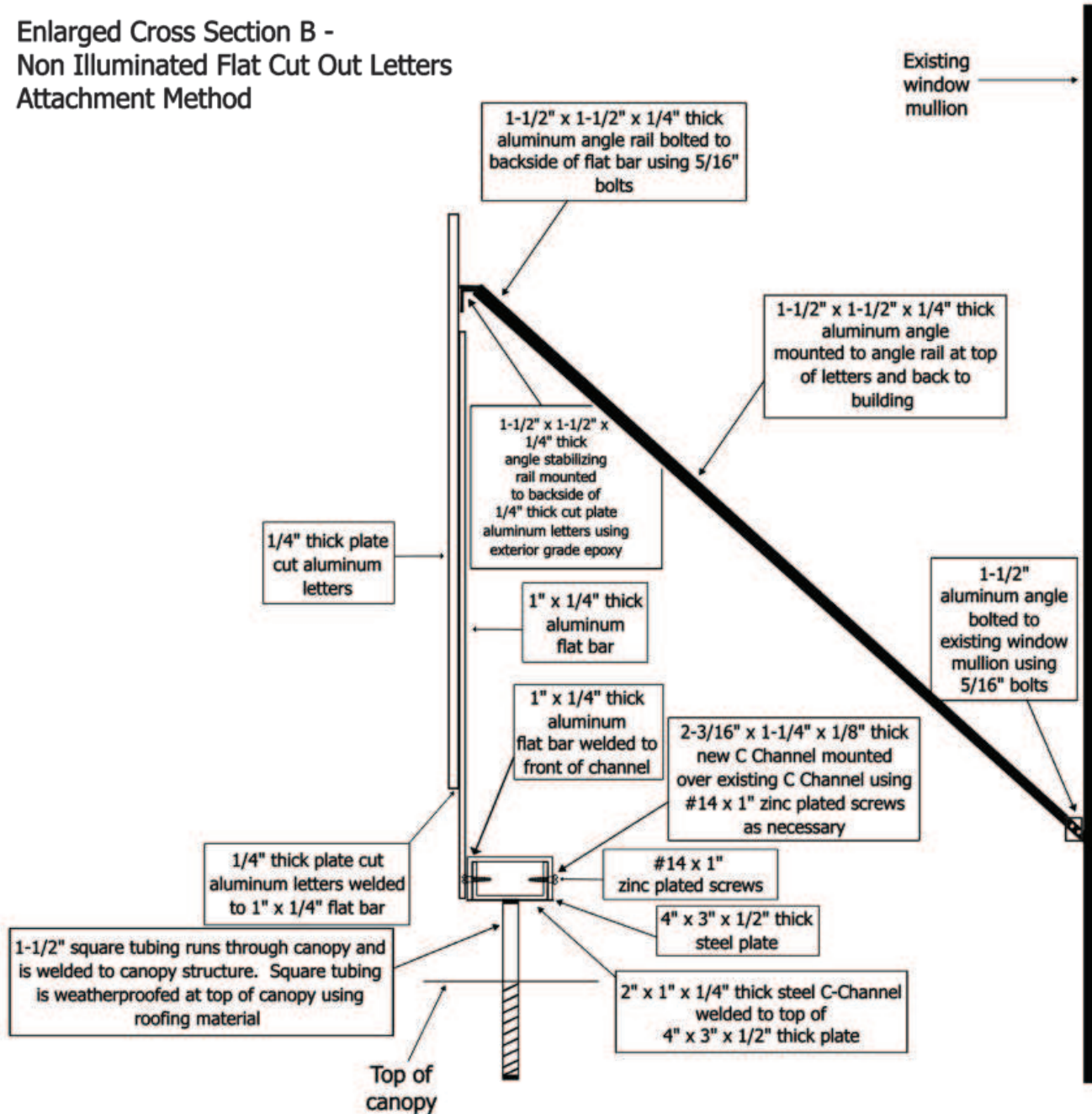


DEPAUL COMMUNITY HEALTH CENTERS
5630 Read Blvd., New Orleans, LA 70127

*This sign is designed to withstand 130 MPH wind load.
*This sign will be attached using 3/8" thru-bolts or appropriately sized hardware as necessary.

E05

Enlarged Cross Section B -
Non Illuminated Flat Cut Out Letters
Attachment Method



Existing Field Conditions

